

# Anti-TUB1/alpha Tubulin Antibody (R1A02)

## Summary

---

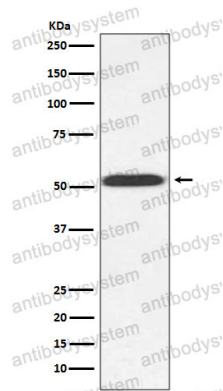
<b>Catalog No.</b>	RXX54601
<b>Clone ID</b>	R1A02
<b>Host species</b>	Rabbit
<b>Tested applications</b>	WB: 1:5000-1:10000
<b>Species reactivity</b>	Baker's yeast
<b>Form</b>	Liquid
<b>Storage buffer</b>	0.01M PBS, pH 7.4, 0.05% BSA, 50% Glycerol, 0.05% Sodium azide.
<b>Concentration</b>	1 mg/ml
<b>Purity</b>	>95% by SDS-PAGE.
<b>Clonality</b>	Monoclonal
<b>Isotype</b>	IgG
<b>Applications</b>	WB
<b>Target</b>	Alpha-tubulin 1, H2 ALPHA, LIS3, TUBA1, TUBA1A, Tuba4a, Tubulin alpha-4A chain, alpha Tubulin
<b>Purification</b>	Protein A/G purified from cell culture supernatant.
<b>Endotoxin level</b>	Please contact with the lab for this information.
<b>Accession</b>	P09733
<b>Stability and Storage</b>	Use a manual defrost freezer and avoid repeated freeze-thaw cycles. Store at +4 °C short term (1-2 weeks). Store at -20 °C 12 months. Store at -80 °C long term.

**Note**

For research use only.

## Data Image

---



Western blot

Western blot analysis of alpha Tubulin expression in *Saccharomyces cerevisiae* (yeast) cell lysate.