

Anti-ACTA1/Alpha Actin Antibody (R1A01)

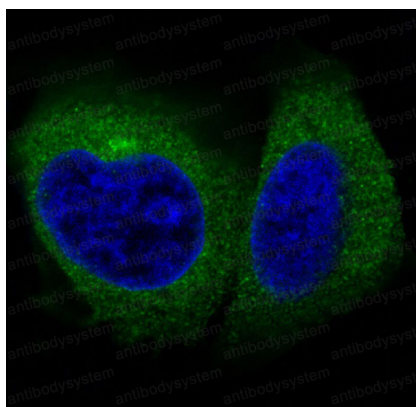
Summary

Catalog No.	RHF62101
Clone ID	R1A01
Host species	Rabbit
Species reactivity	Human, Mouse, Rat, Chicken
Form	Liquid
Storage buffer	0.01M PBS, pH 7.4, 0.05% BSA, 50% Glycerol, 0.05% Sodium azide.
Concentration	1 mg/ml
Purity	>95% by SDS-PAGE.
Clonality	Monoclonal
Isotype	IgG
Applications	FCM, IF, IHC, IP, WB
Target	a actin, ACTA, ACTA1, Actin alpha skeletal muscle, Actin, actina, actine, aktin, Alpha Actin 1, Alpha skeletal muscle Actin, ASMA, CFTD, CFTD1, CFTDM, MPFD, NEM1, NEM2, NEM3, nemaline myopathy type 3, alpha Skeletal muscle actin
Purification	Protein A/G purified from cell culture supernatant.
Endotoxin level	Please contact with the lab for this information.
Accession	P68133
Stability and Storage	Use a manual defrost freezer and avoid repeated freeze-thaw cycles. Store at +4 °C short term (1-2 weeks). Store at -20 °C 12 months. Store at -80 °C long term.

Note

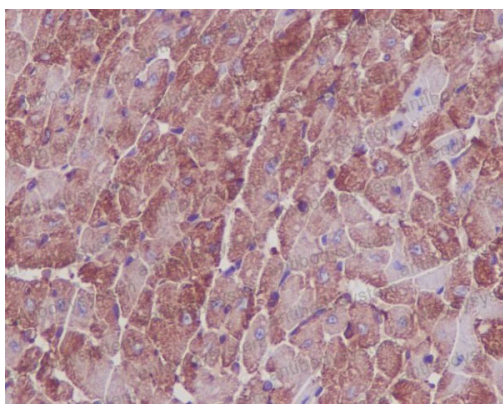
For research use only.

Data Image



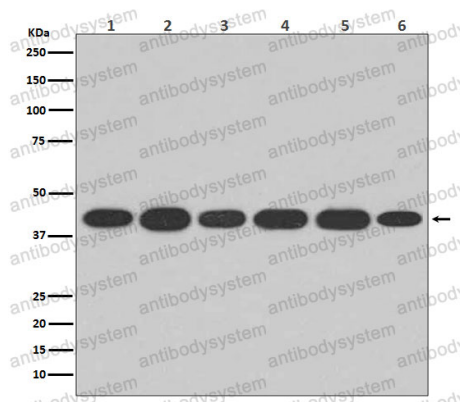
Immunofluorescence

Immunofluorescent analysis of Hela cells, using Actin Antibody.



Immunohistochemical

Immunohistochemical analysis of paraffin-embedded mouse heart, using Actin Antibody.



Western blot

Western blot analysis of Actin expression in (1) Hela cell lysate; (2) Human fetal kidney lysate; (3) 3T3 cell lysate; (4) Mouse spleen lysate; (5) PC-12 cell lysate; (6) Rat heart lysate.