

# Recombinant Human ESM1 Protein, C-10\*His (Active)

## Summary

---

<b>Catalog No.</b>	AHJ64101
<b>Alternative Names</b>	ESM-1, ESM1, Endothelial cell-specific molecule 1
<b>Form</b>	Lyophilized
<b>Storage buffer</b>	Lyophilized from a solution in PBS pH 7.4, 5% Trehalose, 5% Mannitol.
<b>Purity</b>	>90% as determined by SDS-PAGE.
<b>Applications</b>	Bioactivity, ELISA, Immunogen, SDS-PAGE, WB
<b>Biological activity</b>	Measured by its ability of the immobilized protein to support the adhesion of human acute T cell leukemia cells (Jurkat). When $1 \times 10^5$ cells/well are added to recombinant human ESM1 (Cat #: AHJ64101) coated plates, adhesion is induced in a dose dependent manner after a 1 hour incubation at 37 °C. The ED50 for this effect is $2 \times 10^{-10}$ µg/mL.
<b>Endotoxin level</b>	<0.1 EU/µg of the protein by the LAL method.
<b>Expression system</b>	Mammalian Cells
<b>Accession</b>	Q9NQ30
<b>Protein length</b>	Trp20-Arg184
<b>Nature</b>	Recombinant
<b>Stability and Storage</b>	Use a manual defrost freezer and avoid repeated freeze thaw cycles. Store at 2 to 8°C for one week. Store at -20 to -80°C for twelve months from the date of receipt.

## Recombinant Proteins &amp; Antibodies

**Reconstitution**

Reconstitute in sterile water for a stock solution. A copy of datasheet will be provided with the products, please refer to it for details.

**Species**

Homo sapiens (Human)

**Shipping**

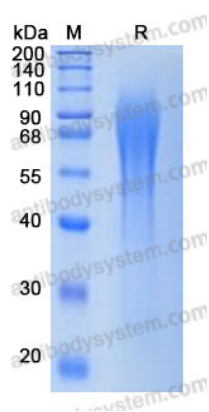
In general, proteins are provided as lyophilized powder/frozen liquid. They are shipped out with dry ice/blue ice unless customers require otherwise.

**Note**

For research use only.

## Data Image

---



SDS-PAGE

SDS-PAGE for Recombinant Human ESM1 protein