

Recombinant Human CLMP/ASAM Protein, C-His (Active)

Summary

Catalog No.	AHJ99001
Alternative Names	CLMP, ACAM, CAR-like membrane protein, Adipocyte adhesion molecule, CXADR-like membrane protein, Coxsackie- and adenovirus receptor-like membrane protein, ASAM
Form	Lyophilized
Storage buffer	Lyophilized from a solution in PBS pH 7.4, 5% Trehalose, 5% Mannitol.
Purity	>90% as determined by SDS-PAGE.
Applications	Bioactivity, ELISA, Immunogen, SDS-PAGE, WB
Biological activity	Measured by the ability of the immobilized protein to support the adhesion of mouse vascular endothelial cells (SVEC410). When 4×10^4 cells/well are added to recombinant human CLMP/ASAM (Cat #: AHJ99001) coated plates (30 µg/mL, 100 µL/well), approximately 25%–50% will adhere after one hour at 37 °C.
Endotoxin level	<0.1 EU/µg of the protein by the LAL method.
Expression system	Mammalian Cells
Accession	Q9H6B4
Protein length	Gly18-Met233
Nature	Recombinant

Recombinant Proteins & Antibodies**Stability and Storage**

Use a manual defrost freezer and avoid repeated freeze thaw cycles. Store at 2 to 8°C for one week. Store at -20 to -80°C for twelve months from the date of receipt.

Reconstitution

Reconstitute in sterile water for a stock solution. A copy of datasheet will be provided with the products, please refer to it for details.

Species

Homo sapiens (Human)

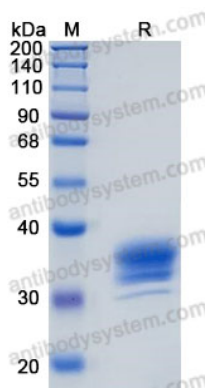
Shipping

In general, proteins are provided as lyophilized powder/frozen liquid. They are shipped out with dry ice/blue ice unless customers require otherwise.

Note

For research use only.

Data Image



SDS-PAGE

SDS-PAGE for Recombinant Human ASAM protein