

Recombinant Human SMOC1 Protein, C-His (Active)

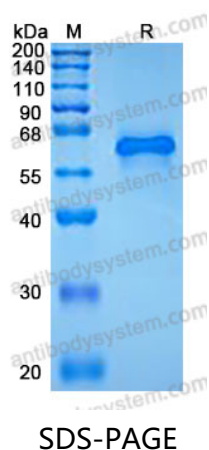
Summary

Catalog No.	AHN57901
Alternative Names	SMOC1, SPARC-related modular calcium-binding protein 1, SMOC-1, Secreted modular calcium-binding protein 1
Form	Lyophilized
Storage buffer	Lyophilized from a solution in PBS pH 7.4, 5% Trehalose, 5% Mannitol.
Purity	>90% as determined by SDS-PAGE.
Applications	Bioactivity, ELISA, Immunogen, SDS-PAGE, WB
Biological activity	Measured by the ability of the immobilized protein to support the adhesion of human epithelial carcinoma cells (A431). When 5×10^4 cells/well are added to rhSMOC1 (Cat #: AHN57901) coated plates, cell adhesion is enhanced in a dose dependent manner after 75 minutes at 37 °C. The ED50 for this effect is 0.5-2 µg/mL.
Endotoxin level	<0.1 EU/µg of the protein by the LAL method.
Expression system	Mammalian Cells
Accession	Q9H4F8
Protein length	His27-Val434
Nature	Recombinant
Stability and Storage	Use a manual defrost freezer and avoid repeated freeze thaw cycles. Store at 2 to 8°C for one week. Store at -20 to -80°C for twelve months from the date of receipt.
Reconstitution	Reconstitute in sterile water for a stock solution. A copy of datasheet will be provided with the products, please refer to it for details.

Recombinant Proteins & Antibodies

Species	Homo sapiens (Human)
Shipping	In general, proteins are provided as lyophilized powder/frozen liquid. They are shipped out with dry ice/blue ice unless customers require otherwise.
Note	For research use only.

Data Image



SDS-PAGE for Recombinant Human SMOC1 protein