

Recombinant Human CD299/CLEC4M Protein, N-hFc (Active)

Summary

| | |
|----------------------------|---|
| Catalog No. | AHJ56001 |
| Alternative Names | DC-SIGNR, DC-SIGN2, CLEC4M, DC-SIGN-related protein, C-type lectin domain family 4 member M, CD299, L-SIGN, CD209L, Liver/lymph node-specific ICAM-3-grabbing non-integrin, CD209L1, Dendritic cell-specific ICAM-3-grabbing non-integrin 2, CD209 antigen-like protein 1 |
| Form | Lyophilized |
| Storage buffer | Lyophilized from a solution in PBS pH 7.4, 5% Trehalose, 5% Mannitol. |
| Purity | >90% as determined by SDS-PAGE. |
| Applications | Bioactivity, ELISA, Immunogen, SDS-PAGE, WB |
| Biological activity | Measured by the ability of the immobilized protein to support the adhesion of ICAM-3 expressing CHO Chinese hamster ovary cells. When 5×10^4 cells/well are added to rhCD299/CLEC4M (Cat #: AHJ56001) coated plates (5 µg/mL with 100 µL/well), approximately 40%-70% of added cells will adhere after 1 hour at room temperature. |
| Endotoxin level | <0.1 EU/µg of the protein by the LAL method. |
| Expression system | Mammalian Cells |
| Accession | Q9H2X3 |
| Protein length | Ser73-Glu376 |
| Nature | Recombinant |

Recombinant Proteins & Antibodies

Stability and Storage

Use a manual defrost freezer and avoid repeated freeze thaw cycles. Store at 2 to 8°C for one week. Store at -20 to -80°C for twelve months from the date of receipt.

Reconstitution

Reconstitute in sterile water for a stock solution. A copy of datasheet will be provided with the products, please refer to it for details.

Species

Homo sapiens (Human)

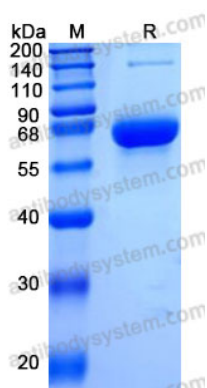
Shipping

In general, proteins are provided as lyophilized powder/frozen liquid. They are shipped out with dry ice/blue ice unless customers require otherwise.

Note

For research use only.

Data Image



SDS-PAGE

SDS-PAGE for Recombinant Human DC-SIGNR protein