

# Recombinant Human CADM1 Protein, C-His (Active)

## Summary

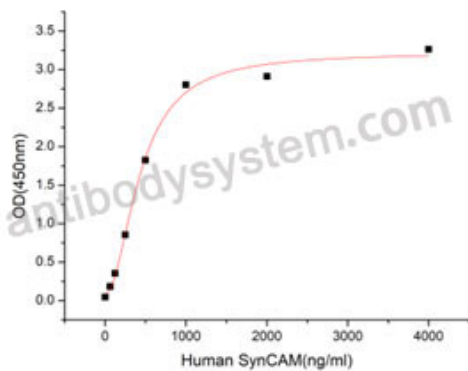
---

<b>Catalog No.</b>	AHN06201
<b>Alternative Names</b>	SgIgSF, Immunoglobulin superfamily member 4, SynCAM, IGSF4A, SYNCAM, TSLC1, Synaptic cell adhesion molecule, IgSF4, Tumor suppressor in lung cancer 1, TSLC-1, CADM1, Spermatogenic immunoglobulin superfamily, Nectin-like protein 2, Cell adhesion molecule 1, NECL2, IGSF4, NECL-2
<b>Form</b>	Lyophilized
<b>Storage buffer</b>	Lyophilized from a solution in PBS pH 7.4, 5% Trehalose, 5% Mannitol.
<b>Purity</b>	>90% as determined by SDS-PAGE.
<b>Applications</b>	Bioactivity, ELISA, Immunogen, SDS-PAGE, WB
<b>Biological activity</b>	Measured by its binding activity in a functional ELISA. Immobilized recombinant human CRTAM at 2 µg/mL (100 µL/well) can bind recombinant human CADM1/SynCAM1 (Cat #: AHN06201) with a linear range of 3-200 ng/mL.
<b>Endotoxin level</b>	<0.1 EU/µg of the protein by the LAL method.
<b>Expression system</b>	Mammalian Cells
<b>Accession</b>	Q9BY67
<b>Protein length</b>	Ile39-Ala375
<b>Nature</b>	Recombinant
<b>Stability and Storage</b>	Use a manual defrost freezer and avoid repeated freeze thaw cycles. Store at 2 to 8°C for one week. Store at -20 to -80°C for twelve months from the date of receipt.

## Recombinant Proteins & Antibodies

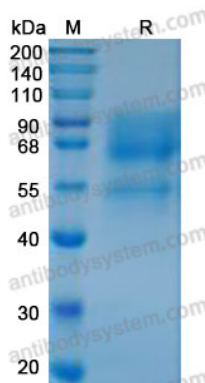
<b>Reconstitution</b>	Reconstitute in sterile water for a stock solution. A copy of datasheet will be provided with the products, please refer to it for details.
<b>Species</b>	Homo sapiens (Human)
<b>Shipping</b>	In general, proteins are provided as lyophilized powder/frozen liquid. They are shipped out with dry ice/blue ice unless customers require otherwise.
<b>Note</b>	For research use only.

## Data Image



Measured by its binding activity in a functional ELISA. Immobilized recombinant human CRTAM at 2  $\mu\text{g/mL}$  (100  $\mu\text{L}$ /well) can bind recombinant human CADM1/SynCAM1 (Cat #: AHN06201) with a linear range of 3-200 ng/mL.

### Bioactivity



### SDS-PAGE

SDS-PAGE for Recombinant Human SynCAM/CADM1 protein