

# Recombinant Human CNDP1 Protein, C-10\*His (Active)

## Summary

---

<b>Catalog No.</b>	AHJ98601
<b>Alternative Names</b>	Carnosine dipeptidase 1, Glutamate carboxypeptidase-like protein 2, Beta-Ala-His dipeptidase, CNDP1, CN1, CNDP dipeptidase 1, Serum carnosinase, CPGL2
<b>Form</b>	Lyophilized
<b>Storage buffer</b>	Lyophilized from a solution in PBS pH 7.4, 5% Trehalose, 5% Mannitol.
<b>Purity</b>	>90% as determined by SDS-PAGE.
<b>Applications</b>	Bioactivity, ELISA, Immunogen, SDS-PAGE, WB
<b>Biological activity</b>	Measured by its ability to cleave carnosine (beta-Ala-L-His) in a two-step assay. The specific activity is >250 pmol/min/μg, as measured under the described conditions.
<b>Endotoxin level</b>	<0.1 EU/μg of the protein by the LAL method.
<b>Expression system</b>	Mammalian Cells
<b>Accession</b>	Q96KN2
<b>Protein length</b>	Pro28-His507
<b>Nature</b>	Recombinant
<b>Stability and Storage</b>	Use a manual defrost freezer and avoid repeated freeze thaw cycles. Store at 2 to 8°C for one week. Store at -20 to -80°C for twelve months from the date of receipt.

## Recombinant Proteins &amp; Antibodies

**Reconstitution**

Reconstitute in sterile water for a stock solution. A copy of datasheet will be provided with the products, please refer to it for details.

**Species**

Homo sapiens (Human)

**Shipping**

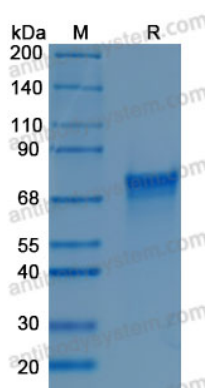
In general, proteins are provided as lyophilized powder/frozen liquid. They are shipped out with dry ice/blue ice unless customers require otherwise.

**Note**

For research use only.

## Data Image

---



SDS-PAGE

SDS-PAGE for Recombinant Human CNDP1/CN1 protein