

Recombinant Human CD352/SLAMF6 Protein, C-His (Active)

Summary

Catalog No.	AHJ38601
Alternative Names	CD352, NTB-A, NK-T-B-antigen, KALI, SLAMF6, Activating NK receptor, SLAM family member 6
Form	Lyophilized
Storage buffer	Lyophilized from a solution in PBS pH 7.4, 5% Trehalose, 5% Mannitol.
Purity	>90% as determined by SDS-PAGE.
Applications	Bioactivity, ELISA, Immunogen, SDS-PAGE, WB
Biological activity	Measured by its binding ability in a functional ELISA. When recombinant human CD352/SLAMF6 (Cat #: AHJ38601) is coated at 1 µg/mL (100 µL/well), the concentration of biotinylated recombinant human CD352/SLAMF6 that produces 50% optimal binding response is 0.6-3 µg/mL.
Endotoxin level	<0.1 EU/µg of the protein by the LAL method.
Expression system	Mammalian Cells
Accession	Q96DU3
Protein length	Gln22-Met226
Nature	Recombinant
Stability and Storage	Use a manual defrost freezer and avoid repeated freeze thaw cycles. Store at 2 to 8°C for one week. Store at -20 to -80°C for twelve months from the date of receipt.

Recombinant Proteins & Antibodies

Reconstitution

Reconstitute in sterile water for a stock solution. A copy of datasheet will be provided with the products, please refer to it for details.

Species

Homo sapiens (Human)

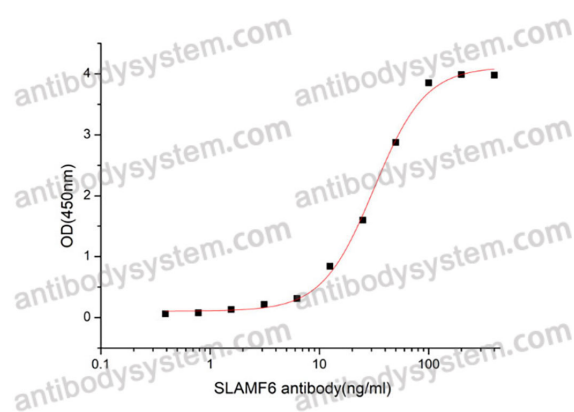
Shipping

In general, proteins are provided as lyophilized powder/frozen liquid. They are shipped out with dry ice/blue ice unless customers require otherwise.

Note

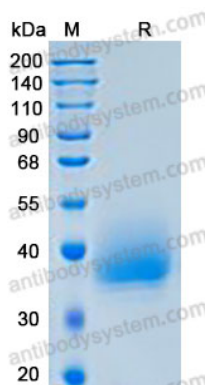
For research use only.

Data Image



Measured by its binding ability in a functional ELISA. When recombinant human CD352/SLAMF6 (Cat #: AHJ38601) is coated at 1 μ g/mL (100 μ L/well), the concentration of biotinylated recombinant human CD352/SLAMF6 that produces 50% optimal binding response is 0.6-3 μ g/mL.

Bioactivity



SDS-PAGE

SDS-PAGE for Recombinant Human SLAMF6 protein