

Recombinant Human IL22RA2/IL-22BP Protein, C-His (Active)

Summary

Catalog No.	AHJ36501
Alternative Names	IL22RA2, Cytokine receptor family type 2, soluble 1, IL-22R-alpha-2, Cytokine receptor family 2 member 10, IL-22BP, CRF2-S1, Interleukin-22-binding protein, ZcytoR16, CRF2-10, Interleukin-22 receptor subunit alpha-2, IL22BP, Cytokine receptor class-II member 10, IL-22 receptor subunit alpha-2, IL-22RA2
Form	Lyophilized
Storage buffer	Lyophilized from a solution in PBS pH 7.4, 5% Trehalose, 5% Mannitol.
Purity	>90% as determined by SDS-PAGE.
Applications	Bioactivity, ELISA, Immunogen, SDS-PAGE, WB
Biological activity	Measured by its ability to inhibit IL-22-induced IL-10 secretion by human colorectal adenocarcinoma cells (COLO 205). The ED50 for this effect is typically 1-5 ng/mL in the presence of 1 ng/mL of recombinant human IL-22.
Endotoxin level	<0.1 EU/μg of the protein by the LAL method.
Expression system	Mammalian Cells
Accession	Q969J5
Protein length	Thr22-Leu231
Nature	Recombinant

Recombinant Proteins & Antibodies**Stability and Storage**

Use a manual defrost freezer and avoid repeated freeze thaw cycles. Store at 2 to 8°C for one week. Store at -20 to -80°C for twelve months from the date of receipt.

Reconstitution

Reconstitute in sterile water for a stock solution. A copy of datasheet will be provided with the products, please refer to it for details.

Species

Homo sapiens (Human)

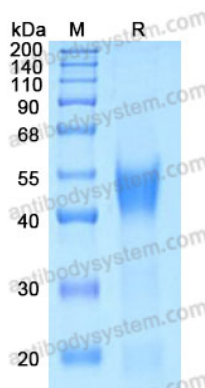
Shipping

In general, proteins are provided as lyophilized powder/frozen liquid. They are shipped out with dry ice/blue ice unless customers require otherwise.

Note

For research use only.

Data Image



SDS-PAGE

SDS-PAGE for Recombinant Human IL22 RA2/IL-22BP protein