

Recombinant Mouse KLK7 Protein, C-His (Active)

Summary

Catalog No.	AME72401
Alternative Names	hSCCE, Stratum corneum chymotryptic enzyme, PRSS6, Kallikrein-7, Serine protease 6, hK7, KLK7, SCCE,
Form	Lyophilized
Storage buffer	Lyophilized from a solution in PBS pH 7.4, 5% Trehalose, 5% Mannitol.
Purity	>90% as determined by SDS-PAGE.
Applications	Bioactivity, ELISA, Immunogen, SDS-PAGE, WB
Biological activity	Measured by its ability to cleave the fluorogenic peptide substrate, McaRKPVE-NvalWRK(Dnp)-NH ₂ . The specific activity is >70 pmol/min/μg, as measured under the described conditions.
Endotoxin level	<0.1 EU/μg of the protein by the LAL method.
Expression system	Mammalian Cells
Accession	Q91VE3
Protein length	Gln22-Arg249
Nature	Recombinant
Stability and Storage	Use a manual defrost freezer and avoid repeated freeze thaw cycles. Store at 2 to 8°C for one week. Store at -20 to -80°C for twelve months from the date of receipt.
Reconstitution	Reconstitute in sterile water for a stock solution. A copy of datasheet will be provided with the products, please refer to it for details.
Species	Mus musculus (Mouse)

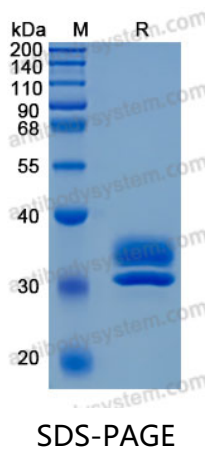
Shipping

In general, proteins are provided as lyophilized powder/frozen liquid. They are shipped out with dry ice/blue ice unless customers require otherwise.

Note

For research use only.

Data Image



SDS-PAGE for Recombinant Mouse Kallikrein 7 protein