

Recombinant Human CD301/CLEC10A Protein, N-His (Active)

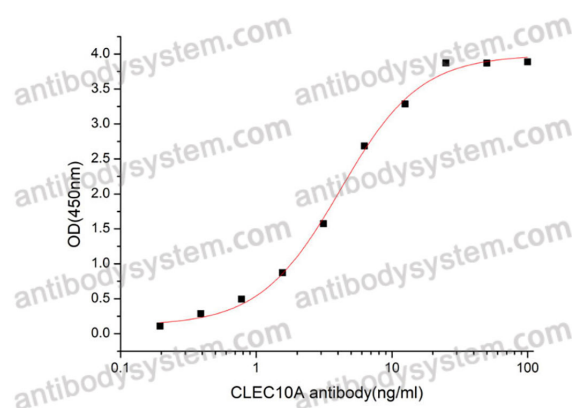
Summary

Catalog No.	AHJ18301
Alternative Names	CD301, Macrophage lectin 2, C-type lectin domain family 10 member A, CLECSF13, C-type lectin superfamily member 14, CLEC10A, CLECSF14, HML
Form	Lyophilized
Storage buffer	Lyophilized from a solution in PBS pH 7.4, 5% Trehalose, 5% Mannitol.
Purity	>90% as determined by SDS-PAGE.
Applications	Bioactivity, ELISA, Immunogen, SDS-PAGE, WB
Biological activity	Measured by its ability to bind biotinylated beta -Galactosamine-NAcetylPolyacrylamide (beta -Gal-NAcPAA) in a functional ELISA.
Endotoxin level	<0.1 EU/μg of the protein by the LAL method.
Expression system	Mammalian Cells
Accession	Q8IUN9
Protein length	Gln61-His316
Nature	Recombinant
Stability and Storage	Use a manual defrost freezer and avoid repeated freeze thaw cycles. Store at 2 to 8°C for one week. Store at -20 to -80°C for twelve months from the date of receipt.
Reconstitution	Reconstitute in sterile water for a stock solution. A copy of datasheet will be provided with the products, please refer to it for details.

Recombinant Proteins & Antibodies

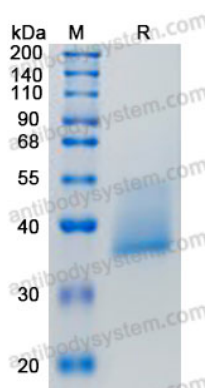
Species	Homo sapiens (Human)
Shipping	In general, proteins are provided as lyophilized powder/frozen liquid. They are shipped out with dry ice/blue ice unless customers require otherwise.
Note	For research use only.

Data Image



Measured by its ability to bind biotinylated beta - Galactosamine-NAcetylPolyacrylamide (beta -Gal-NAcPAA) in a functional ELISA.

Bioactivity



SDS-PAGE

SDS-PAGE for Recombinant Human CLEC10A protein