

# Recombinant Mouse KITLG/SCF Protein, C-hFc-His (Active)

## Summary

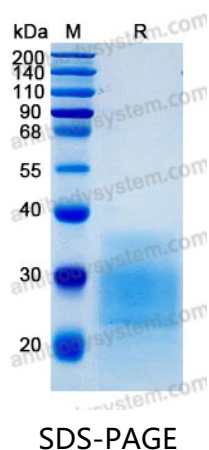
---

<b>Catalog No.</b>	AMD46501
<b>Alternative Names</b>	Stem cell factor, c-Kit ligand, sKITLG, Mast cell growth factor, MGF, Kit ligand, SCF, KITLG
<b>Form</b>	Lyophilized
<b>Storage buffer</b>	Lyophilized from a solution in PBS pH 7.4, 5% Trehalose, 5% Mannitol.
<b>Purity</b>	>90% as determined by SDS-PAGE.
<b>Applications</b>	Bioactivity, ELISA, Immunogen, SDS-PAGE, WB
<b>Biological activity</b>	Measured in a cell proliferation assay using human erythroleukemic cells (TF-1). The ED50 for this effect is 0.5-1.0 ng/mL, corresponding to a specific activity of $1.0 \times 10^6$ - $2.0 \times 10^6$ units/mg.
<b>Endotoxin level</b>	<0.1 EU/ $\mu$ g of the protein by the LAL method.
<b>Expression system</b>	Mammalian Cells
<b>Accession</b>	Q78ED8
<b>Protein length</b>	Lys26-Ala189
<b>Nature</b>	Recombinant
<b>Stability and Storage</b>	Use a manual defrost freezer and avoid repeated freeze thaw cycles. Store at 2 to 8°C for one week. Store at -20 to -80°C for twelve months from the date of receipt.
<b>Reconstitution</b>	Reconstitute in sterile water for a stock solution. A copy of datasheet will be provided with the products, please refer to it for details.

## Recombinant Proteins &amp; Antibodies

Species	Mus musculus (Mouse)
Shipping	In general, proteins are provided as lyophilized powder/frozen liquid. They are shipped out with dry ice/blue ice unless customers require otherwise.
Note	For research use only.

## Data Image



SDS-PAGE for Recombinant Mouse Kitl protein