

Recombinant Mouse CHI3L1 Protein, C-His (Active)

Summary

Catalog No.	AME16901
Alternative Names	CHI3L1, GP-39, YKL-40, Chitinase-3-like protein 1, CGP-39, 39 kDa synovial protein, hCGP-39, Cartilage glycoprotein 39,
Form	Lyophilized
Storage buffer	Lyophilized from a solution in PBS pH 7.4, 5% Trehalose, 5% Mannitol.
Purity	>90% as determined by SDS-PAGE.
Applications	Bioactivity, ELISA, Immunogen, SDS-PAGE, WB
Biological activity	Measured by the ability of the immobilized protein to support the adhesion of human squamous cell carcinoma cells (FaDu). When 5×10^4 cells per well are added to rmCHI3L1 (Cat #: AME16901) coated plate, cell adhesion is enhanced in a dose dependent manner after 30 minutes at 37 °C. The ED50 for this effect is 0.8-3.2 µg/mL.
Endotoxin level	<0.1 EU/µg of the protein by the LAL method.
Expression system	Mammalian Cells
Accession	Q61362
Protein length	Met22-Thr381
Nature	Recombinant
Stability and Storage	Use a manual defrost freezer and avoid repeated freeze thaw cycles. Store at 2 to 8°C for one week. Store at -20 to -80°C for twelve months from the date of receipt.
Reconstitution	Reconstitute in sterile water for a stock solution. A copy of datasheet will be provided with the products, please refer to it for details.

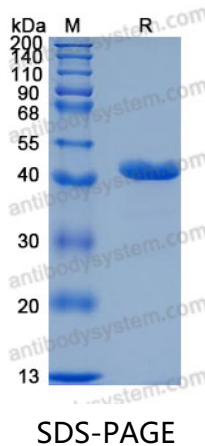
Recombinant Proteins & Antibodies

Species Mus musculus (Mouse)

Shipping In general, proteins are provided as lyophilized powder/frozen liquid.
They are shipped out with dry ice/blue ice unless customers require otherwise.

Note For research use only.

Data Image



SDS-PAGE for Recombinant Mouse Chitinase 3-like
1 protein