

# Recombinant Mouse Adiponectin/ACRP30/ADIPOQ Protein, C-His (Active)

## Summary

---

<b>Catalog No.</b>	AMH22001
<b>Alternative Names</b>	Adiponectin, 30 kDa adipocyte complement-related protein, Adipocyte complement-related 30 kDa protein, ACRP30, Adipocyte, C1q and collagen domain-containing protein, Adipocyte-specific protein AdipoQ, Adipoq, Acdc, Acrp30, Apm1
<b>Form</b>	Lyophilized
<b>Storage buffer</b>	Lyophilized from a solution in PBS pH 7.4, 5% Trehalose, 5% Mannitol.
<b>Purity</b>	>90% as determined by SDS-PAGE.
<b>Applications</b>	Bioactivity, ELISA, Immunogen, SDS-PAGE, WB
<b>Biological activity</b>	Measured by its ability to induce TIMP-1 secretion by mouse macrophages. Kumada. The ED50 for this effect is 5-20 µg/mL.
<b>Endotoxin level</b>	<0.1 EU/µg of the protein by the LAL method.
<b>Expression system</b>	Mammalian Cells
<b>Accession</b>	Q60994
<b>Protein length</b>	Glu18-Asn247
<b>Nature</b>	Recombinant
<b>Stability and Storage</b>	Use a manual defrost freezer and avoid repeated freeze thaw cycles. Store at 2 to 8°C for one week. Store at -20 to -80°C for twelve months from the date of receipt.

## Recombinant Proteins & Antibodies

### Reconstitution

Reconstitute in sterile water for a stock solution. A copy of datasheet will be provided with the products, please refer to it for details.

### Species

Mus musculus (Mouse)

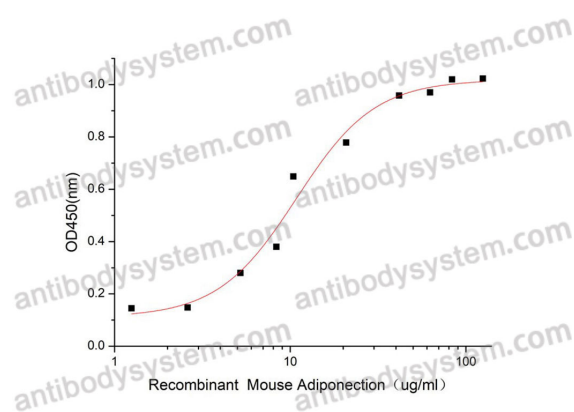
### Shipping

In general, proteins are provided as lyophilized powder/frozen liquid. They are shipped out with dry ice/blue ice unless customers require otherwise.

### Note

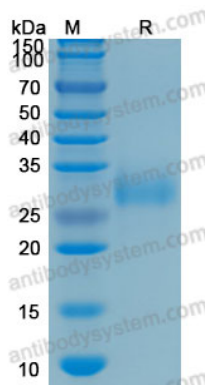
For research use only.

## Data Image



Measured by its ability to induce TIMP-1 secretion by mouse macrophages. Kumada. The ED50 for this effect is 5-20  $\mu$ g/mL.

### Bioactivity



### SDS-PAGE

SDS-PAGE for Recombinant Recombinant mouse Adiponectin protein protein