

# Recombinant Mouse CD215/IL15RA Protein, C-hFc-His (Active)

## Summary

---

<b>Catalog No.</b>	AMG46401
<b>Alternative Names</b>	IL-15 receptor subunit alpha, sIL-15R-alpha, IL-15RA, CD215, sIL-15 receptor subunit alpha, Interleukin-15 receptor subunit alpha, IL-15R-alpha, sIL-15RA, IL15RA
<b>Form</b>	Lyophilized
<b>Storage buffer</b>	Lyophilized from a solution in PBS pH 7.4, 5% Trehalose, 5% Mannitol.
<b>Purity</b>	>90% as determined by SDS-PAGE.
<b>Applications</b>	Bioactivity, ELISA, Immunogen, SDS-PAGE, WB
<b>Biological activity</b>	Immobilized human IL15 at 1 µg/mL (100 µL/well) can bind Mouse CD215/IL15RA (Cat #: AMG46401) with a linear range of 0.3-77 ng/mL.
<b>Endotoxin level</b>	<0.1 EU/µg of the protein by the LAL method.
<b>Expression system</b>	Mammalian Cells
<b>Accession</b>	Q60819
<b>Protein length</b>	Gly33-Lys205
<b>Nature</b>	Recombinant
<b>Stability and Storage</b>	Use a manual defrost freezer and avoid repeated freeze thaw cycles. Store at 2 to 8°C for one week. Store at -20 to -80°C for twelve months from the date of receipt.
<b>Reconstitution</b>	Reconstitute in sterile water for a stock solution. A copy of datasheet will be provided with the products, please refer to it for details.

---

Recombinant Proteins & Antibodies

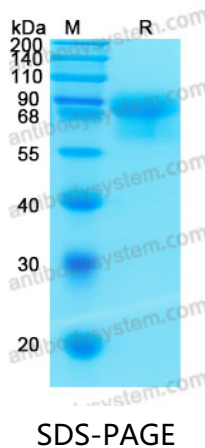
**Species** Mus musculus (Mouse)

**Shipping** In general, proteins are provided as lyophilized powder/frozen liquid.  
They are shipped out with dry ice/blue ice unless customers require otherwise.

**Note** For research use only.

## Data Image

---



SDS-PAGE for Recombinant Mouse IL-15R alpha protein