

Recombinant Mouse CSF1/M-CSF Protein, C-His (Active)

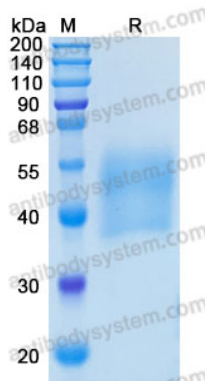
Summary

Catalog No.	AMC42101
Alternative Names	Macrophage colony-stimulating factor 1, CSF-1, MCSF, Processed macrophage colony-stimulating factor 1, Csf1, Csfm
Form	Lyophilized
Storage buffer	Lyophilized from a solution in PBS pH 7.4, 5% Trehalose, 5% Mannitol.
Purity	>90% as determined by SDS-PAGE.
Applications	Bioactivity, ELISA, Immunogen, SDS-PAGE, WB
Biological activity	Recombinant mouse CSF1/M-CSF (Cat #: AMC42101) promotes the proliferation of mouse myelogenous leukemia lymphoblast cells (MNFS-60). The ED50 for this effect is typically 0.1-0.4 ng/mL
Endotoxin level	<0.1 EU/μg of the protein by the LAL method.
Expression system	Mammalian Cells
Accession	Q3U4F9
Protein length	Lys33-Glu262
Nature	Recombinant
Stability and Storage	Use a manual defrost freezer and avoid repeated freeze thaw cycles. Store at 2 to 8°C for one week. Store at -20 to -80°C for twelve months from the date of receipt.
Reconstitution	Reconstitute in sterile water for a stock solution. A copy of datasheet will be provided with the products, please refer to it for details.

Recombinant Proteins & Antibodies

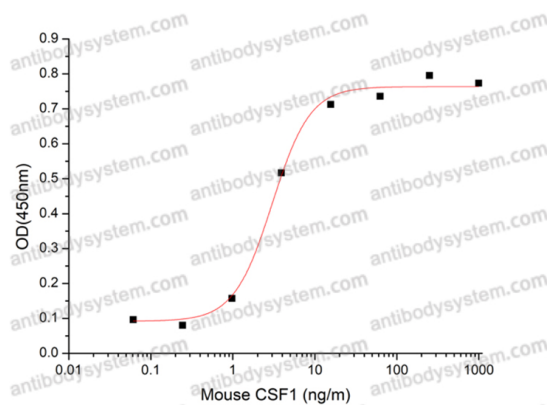
Species	Mus musculus (Mouse)
Shipping	In general, proteins are provided as lyophilized powder/frozen liquid. They are shipped out with dry ice/blue ice unless customers require otherwise.
Note	For research use only.

Data Image



SDS-PAGE

SDS-PAGE for Recombinant Mouse M-CSF protein



Bioactivity

Recombinant Mouse CSF1 promotes the proliferation of MNFS-60 mouse myelogenous leukemia lymphoblast cells. The ED50 for this effect is typically 3.0 ng/mL