

Recombinant Pig CSF2/GM-CSF Protein, C-His (Active)

Summary

Catalog No.	APC06701
Alternative Names	Granulocyte-macrophage colony-stimulating factor, GM-CSF, Colony-stimulating factor, CSF, CSF2
Form	Lyophilized
Storage buffer	Lyophilized from a solution in PBS pH 7.4, 5% Trehalose, 5% Mannitol.
Purity	>90% as determined by SDS-PAGE.
Applications	Bioactivity, ELISA, Immunogen, SDS-PAGE, WB
Biological activity	Measured in a cell proliferation assay using human erythroleukemic cells (TF 1). The ED50 for this effect is typically 0.6-3.8 ng/mL.
Endotoxin level	<0.1 EU/μg of the protein by the LAL method.
Expression system	Mammalian Cells
Accession	Q29118
Protein length	Ala18-Lys144
Nature	Recombinant
Stability and Storage	Use a manual defrost freezer and avoid repeated freeze thaw cycles. Store at 2 to 8°C for one week. Store at -20 to -80°C for twelve months from the date of receipt.
Reconstitution	Reconstitute in sterile water for a stock solution.
Species	Sus scrofa (Pig)

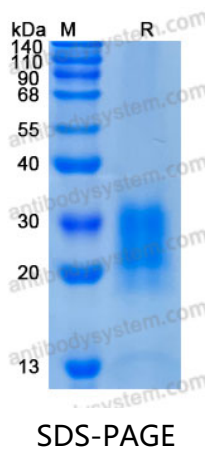
Shipping

In general, proteins are provided as lyophilized powder/frozen liquid. They are shipped out with dry ice/blue ice unless customers require otherwise.

Note

For research use only.

Data Image



SDS-PAGE for Recombinant Porcine GM-CSF protein