

Recombinant Human CHI3L2 Protein, C-10*His (Active)

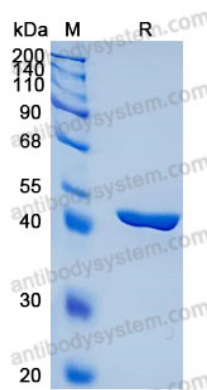
Summary

Catalog No.	AHH19601
Alternative Names	CHI3L2, YKL-39, Chondrocyte protein 39, Chitinase-3-like protein 2
Form	Lyophilized
Storage buffer	Lyophilized from a solution in PBS pH 7.4, 5% Trehalose, 5% Mannitol.
Purity	>90% as determined by SDS-PAGE.
Applications	Bioactivity, ELISA, Immunogen, SDS-PAGE, WB
Biological activity	Measured by the ability of the immobilized protein to support the adhesion of human squamous cell carcinoma cells (FaDu). When 5×10^4 cells per well are added to rhCHI3L2 (Cat #: AHH19601) coated plates for 30 minutes at 37 °C, cell adhesion is enhanced in a dose dependent manner with typical ED50 range of 0.7-2.8 µg/mL. Optimal dilutions should be determined by each laboratory for each application.
Endotoxin level	<0.1 EU/µg of the protein by the LAL method.
Expression system	Mammalian Cells
Accession	Q15782
Protein length	Tyr27-Leu390
Nature	Recombinant
Stability and Storage	Use a manual defrost freezer and avoid repeated freeze thaw cycles. Store at 2 to 8°C for one week. Store at -20 to -80°C for twelve months from the date of receipt.

Recombinant Proteins & Antibodies

Reconstitution	Reconstitute in sterile water for a stock solution. A copy of datasheet will be provided with the products, please refer to it for details.
Species	Homo sapiens (Human)
Shipping	In general, proteins are provided as lyophilized powder/frozen liquid. They are shipped out with dry ice/blue ice unless customers require otherwise.
Note	For research use only.

Data Image



SDS-PAGE

SDS-PAGE for Recombinant Human Chitinase 3-like
2 protein