

# Recombinant Mouse CSF2/GM-CSF Protein, N-His (Active)

## Summary

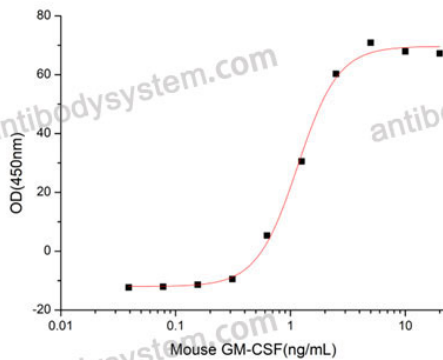
---

<b>Catalog No.</b>	AMC06701
<b>Alternative Names</b>	Granulocyte-macrophage colony-stimulating factor, GM-CSF, Colony-stimulating factor, CSF, Csf2, Csfgm
<b>Form</b>	Lyophilized
<b>Storage buffer</b>	Lyophilized from a solution in PBS pH 7.4, 5% Trehalose, 5% Mannitol.
<b>Purity</b>	>90% as determined by SDS-PAGE.
<b>Applications</b>	Bioactivity, ELISA, Immunogen, SDS-PAGE, WB
<b>Biological activity</b>	Measured in a cell proliferation assay using FDC-P1 cells. The ED50 for this effect is typically 0.04-0.17 ng/mL, corresponding to a specific activity of $5.88 \times 10^6 \sim 2.5 \times 10^7$ units/mg.
<b>Endotoxin level</b>	<0.1 EU/ $\mu$ g of the protein by the LAL method.
<b>Expression system</b>	Mammalian Cells
<b>Accession</b>	Q14AD9
<b>Protein length</b>	Ala18-Lys141
<b>Nature</b>	Recombinant
<b>Stability and Storage</b>	Use a manual defrost freezer and avoid repeated freeze thaw cycles. Store at 2 to 8°C for one week. Store at -20 to -80°C for twelve months from the date of receipt.
<b>Reconstitution</b>	Reconstitute in sterile water for a stock solution. A copy of datasheet will be provided with the products, please refer to it for details.

## Recombinant Proteins & Antibodies

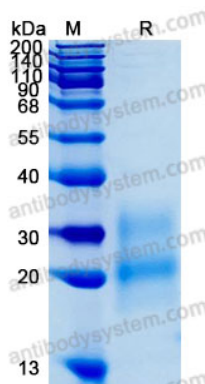
<b>Species</b>	Mus musculus (Mouse)
<b>Shipping</b>	In general, proteins are provided as lyophilized powder/frozen liquid. They are shipped out with dry ice/blue ice unless customers require otherwise.
<b>Note</b>	For research use only.

## Data Image



Measured in a cell proliferation assay using FDC-P1 cells. The ED50 for this effect is typically 0.04-0.17 ng/mL, corresponding to a specific activity of  $5.88 \times 10^6 \sim 2.5 \times 10^7$  units/mg.

### Bioactivity



### SDS-PAGE

SDS-PAGE for Recombinant Mouse GM-CSF protein