

Recombinant Human CDw210a/IL10RA Protein, C-hFc (Active)

Summary

Catalog No.	AHG62901
Alternative Names	IL-10 receptor subunit alpha, IL-10R1, Interleukin-10 receptor subunit alpha, Interleukin-10 receptor subunit 1, CD210, IL10RA, CDw210a, IL-10R subunit alpha, IL-10R subunit 1, IL10R, IL-10RA
Form	Lyophilized
Storage buffer	Lyophilized from a solution in PBS pH 7.4, 5% Trehalose, 5% Mannitol.
Purity	>90% as determined by SDS-PAGE.
Applications	Bioactivity, ELISA, Immunogen, SDS-PAGE, WB
Biological activity	Immobilized human IL10 at 2 µg/mL (100 µL/well) can bind human CDw210a/IL10RA (Cat #: AHG62901) with a linear range of 0.1-8.7 ng/mL.
Endotoxin level	<0.1 EU/µg of the protein by the LAL method.
Expression system	Mammalian Cells
Accession	Q13651
Protein length	His22-Asn235
Nature	Recombinant
Stability and Storage	Use a manual defrost freezer and avoid repeated freeze thaw cycles. Store at 2 to 8°C for one week. Store at -20 to -80°C for twelve months from the date of receipt.
Reconstitution	Reconstitute in sterile water for a stock solution. A copy of datasheet will be provided with the products, please refer to it for details.

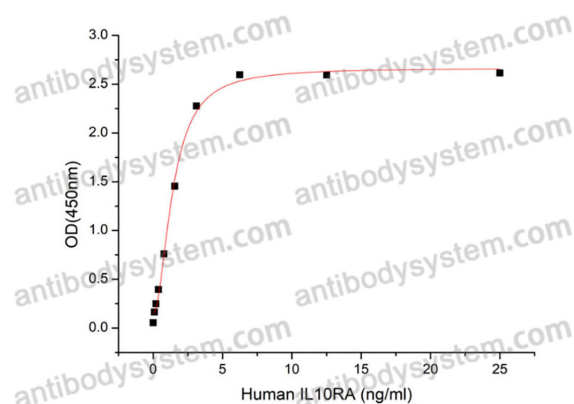
Recombinant Proteins & Antibodies

Species Homo sapiens (Human)

Shipping In general, proteins are provided as lyophilized powder/frozen liquid.
They are shipped out with dry ice/blue ice unless customers require otherwise.

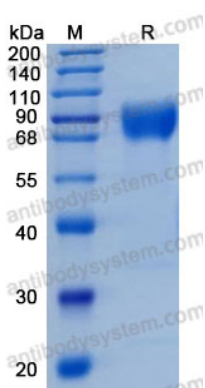
Note For research use only.

Data Image



Immobilized human IL10 at 2 $\mu\text{g/mL}$ (100 $\mu\text{L/well}$) can bind human CDw210a/IL10RA (Cat #: AHG62901) with a linear range of 0.1-8.7 ng/mL.

Bioactivity



SDS-PAGE

SDS-PAGE for Recombinant Human IL-10 R alpha protein