

Recombinant Mouse CD62E/SELE Protein, C-hFc-His (Active)

Summary

Catalog No.	AMD18601
Alternative Names	E-selectin, CD62 antigen-like family member E, Endothelial leukocyte adhesion molecule 1, ELAM-1, Leukocyte-endothelial cell adhesion molecule 2, LECAM2, CD62E, Sele, Elam-1
Form	Lyophilized
Storage buffer	Lyophilized from a solution in PBS pH 7.4, 5% Trehalose, 5% Mannitol.
Purity	>90% as determined by SDS-PAGE.
Applications	Bioactivity, ELISA, Immunogen, SDS-PAGE, WB
Biological activity	Measured by the ability of the immobilized protein to support the adhesion of human histiocytic lymphoma cells (U937). When 5×10^4 cells/well are added to mouse CD62E/SELE (Cat #: AMD18601) coated plates (2 µg/mL with 100 µL/well), approximately 85-100% will adhere for 1 hour incubation at room temperature.
Endotoxin level	<0.1 EU/µg of the protein by the LAL method.
Expression system	Mammalian Cells
Accession	Q00690
Protein length	Trp22-Pro557
Nature	Recombinant

Recombinant Proteins & Antibodies**Stability and Storage**

Use a manual defrost freezer and avoid repeated freeze thaw cycles. Store at 2 to 8°C for one week. Store at -20 to -80°C for twelve months from the date of receipt.

Reconstitution

Reconstitute in sterile water for a stock solution. A copy of datasheet will be provided with the products, please refer to it for details.

Species

Mus musculus (Mouse)

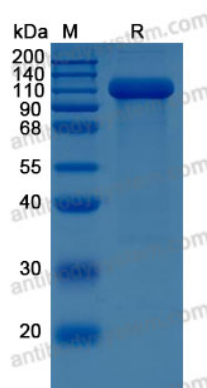
Shipping

In general, proteins are provided as lyophilized powder/frozen liquid. They are shipped out with dry ice/blue ice unless customers require otherwise.

Note

For research use only.

Data Image



SDS-PAGE

SDS-PAGE for Recombinant Mouse E-
Selectin/CD62E protein