

Recombinant Mouse CTSC Protein, C-10*His (Active)

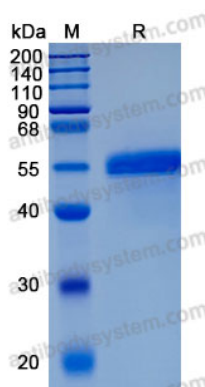
Summary

Catalog No.	AME99101
Alternative Names	Dipeptidyl peptidase 1, Dipeptidyl peptidase I exclusion domain chain, DPPI, Cathepsin J, Dipeptidyl transferase, Dipeptidyl peptidase I heavy chain, CTSC, Dipeptidyl peptidase I, Dipeptidyl peptidase I light chain, CPPI, Cathepsin C, DPP-I,
Form	Lyophilized
Storage buffer	Lyophilized from a solution in PBS pH 7.4, 5% Trehalose, 5% Mannitol.
Purity	>90% as determined by SDS-PAGE.
Applications	Bioactivity, ELISA, Immunogen, SDS-PAGE, WB
Biological activity	Measured by its ability to cleave the fluorogenic peptide substrate, Gly-Arg-7-amido-4-methylcoumarin (GR-AMC). The specific activity is > 60,000 pmol/min/μg, as measured under the described conditions.
Endotoxin level	<0.1 EU/μg of the protein by the LAL method.
Expression system	Mammalian Cells
Accession	P97821
Protein length	Asp25-Leu462
Nature	Recombinant
Stability and Storage	Use a manual defrost freezer and avoid repeated freeze thaw cycles. Store at 2 to 8°C for one week. Store at -20 to -80°C for twelve months from the date of receipt.
Reconstitution	Reconstitute in sterile water for a stock solution. A copy of datasheet will be provided with the products, please refer to it for details.

Recombinant Proteins & Antibodies

Species	Mus musculus (Mouse)
Shipping	In general, proteins are provided as lyophilized powder/frozen liquid. They are shipped out with dry ice/blue ice unless customers require otherwise.
Note	For research use only.

Data Image



SDS-PAGE

SDS-PAGE for Recombinant Mouse Cathepsin
C/DPPI protein