

Recombinant Human CD213a1/IL13RA1 Protein, C-His (Active)

Summary

Catalog No.	AHF69501
Alternative Names	IL13R, IL-13R subunit alpha-1, IL13RA1, IL13RA, IL-13RA1, CD213a1, Interleukin-13 receptor subunit alpha-1, IL-13 receptor subunit alpha-1, CT19, IL-13R-alpha-1, Cancer/testis antigen 19
Form	Lyophilized
Storage buffer	Lyophilized from a solution in PBS pH 7.4, 5% Trehalose, 5% Mannitol.
Purity	>90% as determined by SDS-PAGE.
Applications	Bioactivity, ELISA, Immunogen, SDS-PAGE, WB
Biological activity	Immobilized human IL-13 at 2µg/ml (100µl/well) on the plate. Dose response curve for Biotinylated human CD213a1/IL13RA1 (Cat #: AHF69501) with the EC50 of 2.8µg/ml determined by ELISA.
Endotoxin level	<0.1 EU/µg of the protein by the LAL method.
Expression system	Mammalian Cells
Accession	P78552
Protein length	Ala27-Thr343
Nature	Recombinant
Stability and Storage	Use a manual defrost freezer and avoid repeated freeze thaw cycles. Store at 2 to 8°C for one week. Store at -20 to -80°C for twelve months from the date of receipt.

Recombinant Proteins & Antibodies

Reconstitution

Reconstitute in sterile water for a stock solution. A copy of datasheet will be provided with the products, please refer to it for details.

Species

Homo sapiens (Human)

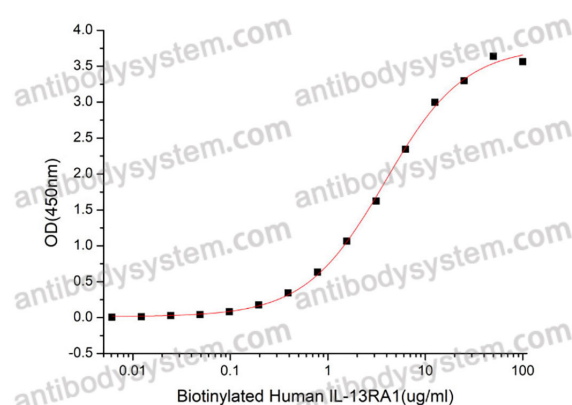
Shipping

In general, proteins are provided as lyophilized powder/frozen liquid. They are shipped out with dry ice/blue ice unless customers require otherwise.

Note

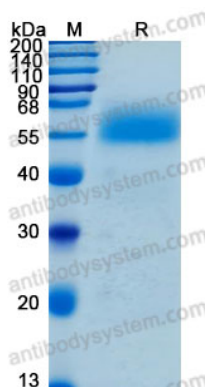
For research use only.

Data Image



Immobilized human IL-13 at 2µg/ml (100µl/well) on the plate. Dose response curve for Biotinylated human CD213a1/IL13RA1 (Cat #: AHF69501) with the EC50 of 2.8µg/ml determined by ELISA.

Bioactivity



SDS-PAGE

SDS-PAGE for Recombinant Human IL13RA1 protein