

Recombinant Human BACE1 Protein, C-His (Active)

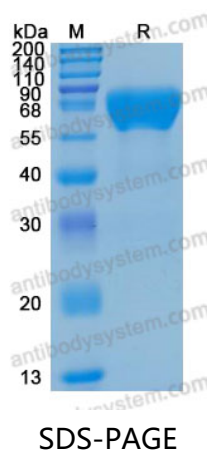
Summary

Catalog No.	AHF19601
Alternative Names	BACE1, Memapsin-2, KIAA1149, Asp 2, Beta-site amyloid precursor protein cleaving enzyme 1, BACE, Beta-site APP cleaving enzyme 1, Beta-secretase 1, Aspartyl protease 2, ASP2, Membrane-associated aspartic protease 2, BACE1
Form	Lyophilized
Storage buffer	Lyophilized from a solution in PBS pH 7.4, 5% Trehalose, 5% Mannitol.
Purity	>90% as determined by SDS-PAGE.
Applications	Bioactivity, ELISA, Immunogen, SDS-PAGE, WB
Biological activity	Measured by its ability to cleave a fluorogenic peptide substrate, Mca-SEVNLDAEFRK(Dpn)RR-NH ₂ . The specific activity is >5.5 pmol/min/μg.
Endotoxin level	<0.1 EU/μg of the protein by the LAL method.
Expression system	Mammalian Cells
Accession	P56817
Protein length	Thr22-Tyr460
Nature	Recombinant
Stability and Storage	Use a manual defrost freezer and avoid repeated freeze thaw cycles. Store at 2 to 8°C for one week. Store at -20 to -80°C for twelve months from the date of receipt.
Reconstitution	Reconstitute in sterile water for a stock solution. A copy of datasheet will be provided with the products, please refer to it for details.

Recombinant Proteins & Antibodies

Species	Homo sapiens (Human)
Shipping	In general, proteins are provided as lyophilized powder/frozen liquid. They are shipped out with dry ice/blue ice unless customers require otherwise.
Note	For research use only.

Data Image



SDS-PAGE for Recombinant Human BACE1 protein