

Recombinant Human LUM/Lumican Protein, C-His (Active)

Summary

Catalog No.	AHE89701
Alternative Names	Keratan sulfate proteoglycan lumican, Lumican, SLRR2D, LDC, LUM, KSPG lumican
Form	Lyophilized
Storage buffer	Lyophilized from a solution in PBS pH 7.4, 5% Trehalose, 5% Mannitol.
Purity	>90% as determined by SDS-PAGE.
Applications	Bioactivity, ELISA, Immunogen, SDS-PAGE, WB
Biological activity	Measured by the ability of the immobilized protein to support the adhesion of bovine corneal endothelial cells (BCE C/D \square b). When 5×10^4 cells per well are added to recombinant human LUM/Lumican (Cat #: AHE89701) coated plates (10 μ g/mL, 100 μ L/well), >35% will adhere after 50 minutes at 37 °C.
Endotoxin level	<0.1 EU/ μ g of the protein by the LAL method.
Expression system	Mammalian Cells
Accession	P51884
Protein length	Gln19-Asn338
Nature	Recombinant
Stability and Storage	Use a manual defrost freezer and avoid repeated freeze thaw cycles. Store at 2 to 8°C for one week. Store at -20 to -80°C for twelve months from the date of receipt.

Recombinant Proteins & Antibodies

Reconstitution

Reconstitute in sterile water for a stock solution. A copy of datasheet will be provided with the products, please refer to it for details.

Species

Homo sapiens (Human)

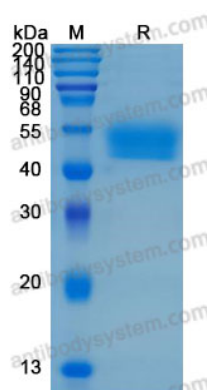
Shipping

In general, proteins are provided as lyophilized powder/frozen liquid. They are shipped out with dry ice/blue ice unless customers require otherwise.

Note

For research use only.

Data Image



SDS-PAGE

SDS-PAGE for Recombinant Human Lumican protein