

Recombinant Human CD239/BCAM Protein, C-His (Active)

Summary

Catalog No.	AHE79001
Alternative Names	Basal cell adhesion molecule, LU, MSK19, Auberger B antigen, CD239, Lutheran blood group glycoprotein, Lutheran antigen, F8/G253 antigen, B-CAM cell surface glycoprotein, BCAM
Form	Lyophilized
Storage buffer	Lyophilized from a solution in PBS pH 7.4, 5% Trehalose, 5% Mannitol.
Purity	>90% as determined by SDS-PAGE.
Applications	Bioactivity, ELISA, Immunogen, SDS-PAGE, WB
Biological activity	Measured by the ability of the immobilized protein to support the adhesion of human osteogenic sarcoma cells (TE 85). The ED50 for this effect is 0.250-3.00 µg/mL.
Endotoxin level	<0.1 EU/µg of the protein by the LAL method.
Expression system	Mammalian Cells
Accession	P50895
Protein length	Glu32-Ala547
Nature	Recombinant
Stability and Storage	Use a manual defrost freezer and avoid repeated freeze thaw cycles. Store at 2 to 8°C for one week. Store at -20 to -80°C for twelve months from the date of receipt.

Recombinant Proteins & Antibodies**Reconstitution**

Reconstitute in sterile water for a stock solution. A copy of datasheet will be provided with the products, please refer to it for details.

Species

Homo sapiens (Human)

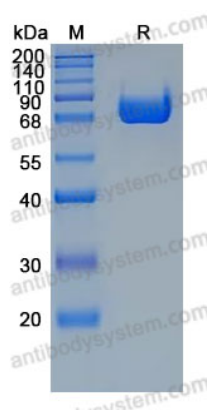
Shipping

In general, proteins are provided as lyophilized powder/frozen liquid. They are shipped out with dry ice/blue ice unless customers require otherwise.

Note

For research use only.

Data Image



SDS-PAGE

SDS-PAGE for Recombinant Human CD239/BCAM protein