

# Recombinant Human CCN3 Protein, C-10\*His (Active)

## Summary

---

<b>Catalog No.</b>	AHE61401
<b>Alternative Names</b>	Insulin-like growth factor-binding protein 9, CCN family member 3, IGF-binding protein 9, IGFBP9, Cellular communication network factor 3, CCN3, IGFBP-9, Nephro blastoma-overexpressed gene protein homolog, Protein NOV homolog, NOV, IBP-9, NOVH, NovH
<b>Form</b>	Lyophilized
<b>Storage buffer</b>	Lyophilized from a solution in PBS pH 7.4, 5% Trehalose, 5% Mannitol.
<b>Purity</b>	>90% as determined by SDS-PAGE.
<b>Applications</b>	Bioactivity, ELISA, Immunogen, SDS-PAGE, WB
<b>Biological activity</b>	Measured by its ability to mediate mouse embryonic fibroblast cell (Balb/3T3) adhesion. rhCCN3/NOV (Cat #: AHE61401), immobilized at 10 µg/mL, 100 µL/well, will mediate >30% Balbc/3T3 cell adhesion (3 x 10 <sup>4</sup> cells/well added).
<b>Endotoxin level</b>	<0.1 EU/µg of the protein by the LAL method.
<b>Expression system</b>	Mammalian Cells
<b>Accession</b>	P48745
<b>Protein length</b>	Thr32-Met357
<b>Nature</b>	Recombinant

---

**Recombinant Proteins & Antibodies****Stability and Storage**

Use a manual defrost freezer and avoid repeated freeze thaw cycles. Store at 2 to 8°C for one week. Store at -20 to -80°C for twelve months from the date of receipt.

**Reconstitution**

Reconstitute in sterile water for a stock solution. A copy of datasheet will be provided with the products, please refer to it for details.

**Species**

Homo sapiens (Human)

**Shipping**

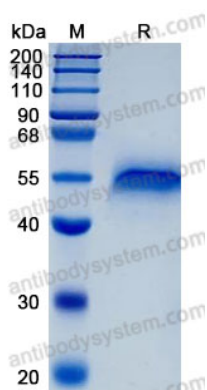
In general, proteins are provided as lyophilized powder/frozen liquid. They are shipped out with dry ice/blue ice unless customers require otherwise.

**Note**

For research use only.

## Data Image

---



SDS-PAGE

SDS-PAGE for Recombinant human CCN3 protein