

Recombinant Human REG1B Protein, C-His (Active)

Summary

Catalog No.	AHE56801
Alternative Names	PSP-2, REG-1-beta, REGL, REG1B, Regenerating islet-derived protein 1-beta, Pancreatic stone protein 2, Regenerating protein I beta, Lithostathine-1-beta, PSPS2
Form	Lyophilized
Storage buffer	Lyophilized from a solution in PBS pH 7.4, 5% Trehalose, 5% Mannitol.
Purity	>90% as determined by SDS-PAGE.
Applications	Bioactivity, ELISA, Immunogen, SDS-PAGE, WB
Biological activity	Measured in a cell proliferation assay using rat schwannoma cells (RT4 D6P2T). The ED50 for this effect is 0.15-0.75 µg/mL.
Endotoxin level	<0.1 EU/µg of the protein by the LAL method.
Expression system	Mammalian Cells
Accession	P48304
Protein length	Gln23-Asn166
Nature	Recombinant
Stability and Storage	Use a manual defrost freezer and avoid repeated freeze thaw cycles. Store at 2 to 8°C for one week. Store at -20 to -80°C for twelve months from the date of receipt.
Reconstitution	Reconstitute in sterile water for a stock solution. A copy of datasheet will be provided with the products, please refer to it for details.
Species	Homo sapiens (Human)

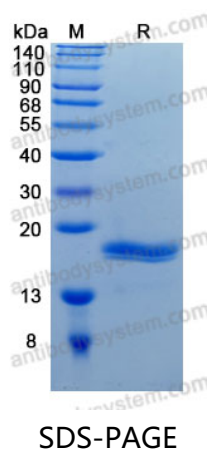
Shipping

In general, proteins are provided as lyophilized powder/frozen liquid. They are shipped out with dry ice/blue ice unless customers require otherwise.

Note

For research use only.

Data Image



SDS-PAGE for Recombinant Human REG1B protein