

# Recombinant Human CD146/MCAM Protein, C-His (Active)

## Summary

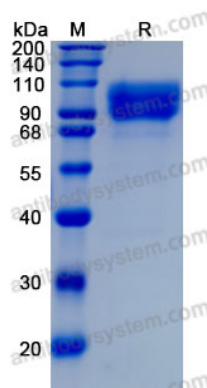
---

<b>Catalog No.</b>	AHE39701
<b>Alternative Names</b>	CD146, Melanoma cell adhesion molecule, S-endo 1 endothelial-associated antigen, Melanoma-associated antigen A32, MUC18, MCAM, Melanoma-associated antigen MUC18, Cell surface glycoprotein MUC18, Cell surface glycoprotein P1H12
<b>Form</b>	Lyophilized
<b>Storage buffer</b>	Lyophilized from a solution in PBS pH 7.4, 5% Trehalose, 5% Mannitol.
<b>Purity</b>	>90% as determined by SDS-PAGE.
<b>Applications</b>	Bioactivity, ELISA, Immunogen, SDS-PAGE, WB
<b>Biological activity</b>	Measured by its binding ability in a functional ELISA. When rh CD146/MCAM (Cat #: AHE39701) is immobilized at 1 µg/mL, 100 µL/well, it binds recombinant human Galectin-3. The concentration of recombinant human Galectin-3 that produces 50% of the optimal binding response is 0.25 1.25 µg/mL.
<b>Endotoxin level</b>	<0.1 EU/µg of the protein by the LAL method.
<b>Expression system</b>	Mammalian Cells
<b>Accession</b>	P43121
<b>Protein length</b>	Val24-Gly559
<b>Nature</b>	Recombinant

## Recombinant Proteins &amp; Antibodies

<b>Stability and Storage</b>	Use a manual defrost freezer and avoid repeated freeze thaw cycles. Store at 2 to 8°C for one week. Store at -20 to -80°C for twelve months from the date of receipt.
<b>Reconstitution</b>	Reconstitute in sterile water for a stock solution. A copy of datasheet will be provided with the products, please refer to it for details.
<b>Species</b>	Homo sapiens (Human)
<b>Shipping</b>	In general, proteins are provided as lyophilized powder/frozen liquid. They are shipped out with dry ice/blue ice unless customers require otherwise.
<b>Note</b>	For research use only.

## Data Image



SDS-PAGE

SDS-PAGE for Recombinant Human CD146 protein