

# Recombinant Human CD66c/CEACAM6 Protein, C-His (Active)

## Summary

---

<b>Catalog No.</b>	AHE25601
<b>Alternative Names</b>	Normal cross-reacting antigen, Carcinoembryonic antigen-related cell adhesion molecule 6, CEACAM6, CD66c, NCA, Non-specific crossreacting antigen
<b>Form</b>	Lyophilized
<b>Storage buffer</b>	Lyophilized from a solution in PBS pH 7.4, 5% Trehalose, 5% Mannitol.
<b>Purity</b>	>90% as determined by SDS-PAGE.
<b>Applications</b>	Bioactivity, ELISA, Immunogen, SDS-PAGE, WB
<b>Biological activity</b>	Measured by the ability of the immobilized protein to support the adhesion of calcium ionophore treated human neutrophils. When $2 \times 10^5$ cells/well are added to CD66c/CEACAM6 (Cat #: AHE25601) coated plates (10 µg/mL, 100 µL/well), 35 ± 60% of the cells will adhere after 20 minutes at 37 °C.
<b>Endotoxin level</b>	<0.1 EU/µg of the protein by the LAL method.
<b>Expression system</b>	Mammalian Cells
<b>Accession</b>	P40199
<b>Protein length</b>	Lys35-Gly320
<b>Nature</b>	Recombinant

---

**Recombinant Proteins & Antibodies****Stability and Storage**

Use a manual defrost freezer and avoid repeated freeze thaw cycles. Store at 2 to 8°C for one week. Store at -20 to -80°C for twelve months from the date of receipt.

**Reconstitution**

Reconstitute in sterile water for a stock solution. A copy of datasheet will be provided with the products, please refer to it for details.

**Species**

Homo sapiens (Human)

**Shipping**

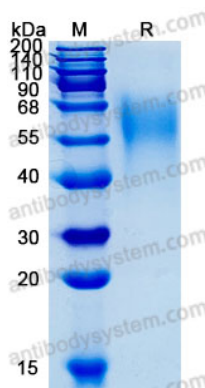
In general, proteins are provided as lyophilized powder/frozen liquid. They are shipped out with dry ice/blue ice unless customers require otherwise.

**Note**

For research use only.

## Data Image

---



SDS-PAGE

SDS-PAGE for Recombinant Human CEACAM6 protein