

Recombinant Human LTBR Protein, C-hFc-His (Active)

Summary

Catalog No.	AHE19601
Alternative Names	Tumor necrosis factor receptor superfamily member 3, Lymphotoxin-beta receptor, TNFCR, TNF-RIII, Tumor necrosis factor receptor 2-related protein, TNFR3, LTBR, TNFRSF3, Tumor necrosis factor receptor type III, D12S370, TNFR-III, Tumor necrosis factor C receptor
Form	Lyophilized
Storage buffer	Lyophilized from a solution in PBS pH 7.4, 5% Trehalose, 5% Mannitol.
Purity	>90% as determined by SDS-PAGE.
Applications	Bioactivity, ELISA, Immunogen, SDS-PAGE, WB
Biological activity	Immobilized recombinant human LIGHT at 1 µg/mL (100 µL/well) can bind recombinant human LTBR (Cat #: AHE19601) with a linear range of 15-55 ng/mL.
Endotoxin level	<0.1 EU/µg of the protein by the LAL method.
Expression system	Mammalian Cells
Accession	P36941
Protein length	Gln31-Met227
Nature	Recombinant
Stability and Storage	Use a manual defrost freezer and avoid repeated freeze thaw cycles. Store at 2 to 8°C for one week. Store at -20 to -80°C for twelve months from the date of receipt.

Recombinant Proteins & Antibodies

Reconstitution

Reconstitute in sterile water for a stock solution. A copy of datasheet will be provided with the products, please refer to it for details.

Species

Homo sapiens (Human)

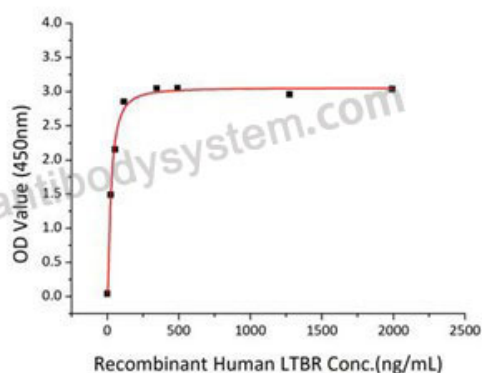
Shipping

In general, proteins are provided as lyophilized powder/frozen liquid. They are shipped out with dry ice/blue ice unless customers require otherwise.

Note

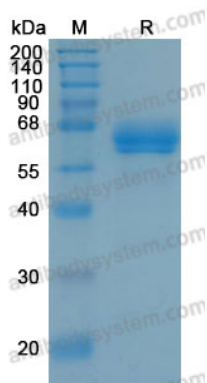
For research use only.

Data Image



Immobilized recombinant human LIGHT at 1 $\mu\text{g/mL}$ (100 $\mu\text{L/well}$) can bind recombinant human LTBR (Cat #: AHE19601) with a linear range of 15-55 ng/mL.

Bioactivity



SDS-PAGE

SDS-PAGE for Recombinant Human LTBR protein