

# Recombinant Human CD147/BSG Protein, C-hFc-His (Active)

## Summary

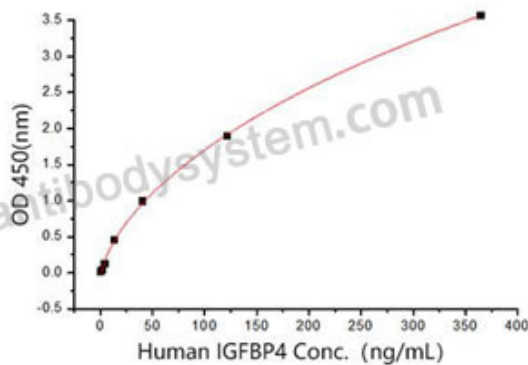
---

<b>Catalog No.</b>	AHE14001
<b>Alternative Names</b>	Hepatoma-associated antigen, BSG, HAb18G, 5F7, TCSF, OK blood group antigen, Collagenase stimulatory factor, CD147, Leukocyte activation antigen M6, Basigin, Extracellular matrix metalloproteinase inducer, EMMPRIN, Tumor cell-derived collagenase stimulatory factor
<b>Form</b>	Lyophilized
<b>Storage buffer</b>	Lyophilized from a solution in PBS pH 7.4, 5% Trehalose, 5% Mannitol.
<b>Purity</b>	>90% as determined by SDS-PAGE.
<b>Applications</b>	Bioactivity, ELISA, Immunogen, SDS-PAGE, WB
<b>Biological activity</b>	Immobilized human CD147/BSG (Cat #: AHE14001) at 1 µg/mL (100 µL/well) can bind CD147 antibody with a linear range of 0.12-3.2 ng/ml.
<b>Endotoxin level</b>	<0.1 EU/µg of the protein by the LAL method.
<b>Expression system</b>	Mammalian Cells
<b>Accession</b>	P35613
<b>Protein length</b>	Phe25-Phe205
<b>Nature</b>	Recombinant
<b>Stability and Storage</b>	Use a manual defrost freezer and avoid repeated freeze thaw cycles. Store at 2 to 8°C for one week. Store at -20 to -80°C for twelve months from the date of receipt.

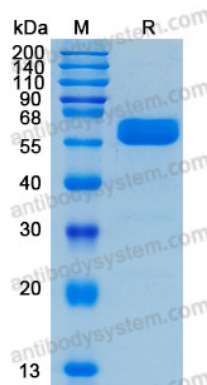
## Recombinant Proteins & Antibodies

<b>Reconstitution</b>	Reconstitute in sterile water for a stock solution. A copy of datasheet will be provided with the products, please refer to it for details.
<b>Species</b>	Homo sapiens (Human)
<b>Shipping</b>	In general, proteins are provided as lyophilized powder/frozen liquid. They are shipped out with dry ice/blue ice unless customers require otherwise.
<b>Note</b>	For research use only.

## Data Image



Bioactivity



SDS-PAGE

Immobilized human CD147/BSG (Cat #: AHE14001) at 1  $\mu$ g/mL (100  $\mu$ L/well) can bind CD147 antibody with a linear range of 0.12-3.2 ng/ml.

SDS-PAGE for Recombinant Human CD147 protein