

# Recombinant Human EPHA3 Protein, C-His (Active)

## Summary

---

<b>Catalog No.</b>	AHD82501
<b>Alternative Names</b>	HEK, Eph-like tyrosine kinase 1, EK4, EPHA3, Tyrosine-protein kinase receptor ETK1, Tyrosine-protein kinase TYRO4, Ephrin type-A receptor 3, hEK4, ETK, TYRO4, ETK1, Human embryo kinase, EPH-like kinase 4
<b>Form</b>	Lyophilized
<b>Storage buffer</b>	Lyophilized from a solution in PBS pH 7.4, 5% Trehalose, 5% Mannitol.
<b>Purity</b>	>90% as determined by SDS-PAGE.
<b>Applications</b>	Bioactivity, ELISA, Immunogen, SDS-PAGE, WB
<b>Biological activity</b>	Measured by its binding ability in a functional ELISA. When recombinant human EphA3 (Cat #: AHD82501) is coated at 2 µg/mL (100 µL/well), the concentration of biotinylated rhEphrin A5 that produces 50% of the optimal binding response is found to be approximately 5-25 ng/mL.
<b>Endotoxin level</b>	<0.1 EU/µg of the protein by the LAL method.
<b>Expression system</b>	Mammalian Cells
<b>Accession</b>	P29320
<b>Protein length</b>	Met1-Gln541
<b>Nature</b>	Recombinant
<b>Stability and Storage</b>	Use a manual defrost freezer and avoid repeated freeze thaw cycles. Store at 2 to 8°C for one week. Store at -20 to -80°C for twelve months from the date of receipt.
<b>Reconstitution</b>	Reconstitute in sterile water for a stock solution. A copy of datasheet will be provided with the products, please refer to it for details.

---

Recombinant Proteins & Antibodies

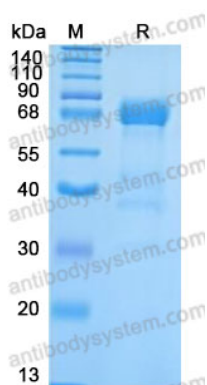
**Species** Homo sapiens (Human)

**Shipping** In general, proteins are provided as lyophilized powder/frozen liquid.  
They are shipped out with dry ice/blue ice unless customers require otherwise.

**Note** For research use only.

## Data Image

---



SDS-PAGE

SDS-PAGE for Recombinant Human Eph receptor  
A3 protein