

Recombinant Human CD38/ADPRC 1 Protein, C-His (Active)

Summary

Catalog No.	AHD80801
Alternative Names	Cyclic ADP-ribose hydrolase 1, ADP-ribosyl cyclase/cyclic ADP-ribose hydrolase 1, cADPr hydrolase 1, 2'-phospho-ADP-ribosyl cyclase/2'-phospho-cyclic-ADP-ribose transferase, T10, 2'-phospho-cyclic-ADP-ribose transferase, CD38, ADPRC 1, ADP-ribosyl cyclase 1, 2'-phospho-ADP-ribosyl cyclase
Form	Lyophilized
Storage buffer	Lyophilized from a solution in PBS pH 7.4, 5% Trehalose, 5% Mannitol.
Purity	>90% as determined by SDS-PAGE.
Applications	Bioactivity, ELISA, Immunogen, SDS-PAGE, WB
Biological activity	Immobilized human CD38/ADPRC 1 (Cat #: AHD80801) Protein at 1µg/mL (100 µL/well) can bind CD38 Rabbit pAb with a linear range of 0.244-3.2 ng/mL.
Endotoxin level	<0.1 EU/µg of the protein by the LAL method.
Expression system	Mammalian Cells
Accession	P28907
Protein length	Val43-Ile300
Nature	Recombinant

Recombinant Proteins & Antibodies**Stability and Storage**

Use a manual defrost freezer and avoid repeated freeze thaw cycles. Store at 2 to 8°C for one week. Store at -20 to -80°C for twelve months from the date of receipt.

Reconstitution

Reconstitute in sterile water for a stock solution. A copy of datasheet will be provided with the products, please refer to it for details.

Species

Homo sapiens (Human)

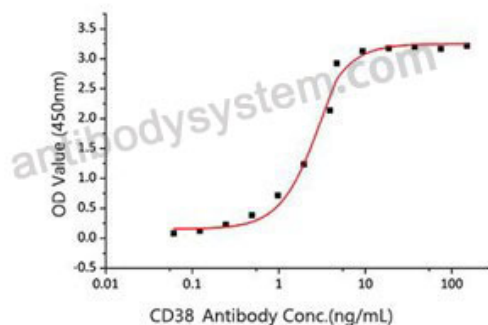
Shipping

In general, proteins are provided as lyophilized powder/frozen liquid. They are shipped out with dry ice/blue ice unless customers require otherwise.

Note

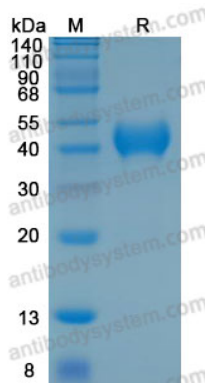
For research use only.

Data Image



Bioactivity

Immobilized human CD38/ADPRC 1 (Cat #: AHD80801) Protein at 1µg/mL (100 µL/well) can bind CD38 Rabbit pAb with a linear range of 0.244-3.2 ng/mL.



SDS-PAGE

SDS-PAGE for Recombinant Human CD38 protein