

Recombinant Human GUCY2C/GCC Protein, C-His (Active)

Summary

Catalog No.	AHD65601
Alternative Names	STAR, Intestinal guanylate cyclase, GC-C, GUC2C, STA receptor, Heat-stable enterotoxin receptor, Guanylyl cyclase C, hSTAR, GUCY2C
Form	Lyophilized
Storage buffer	Lyophilized from a solution in PBS pH 7.4, 5% Trehalose, 5% Mannitol.
Purity	>90% as determined by SDS-PAGE.
Applications	Bioactivity, ELISA, Immunogen, SDS-PAGE, WB
Biological activity	Immobilized human GUCY2C/GCC (Cat #: AHD65601) at 1 µg/mL (100 µL/well) can bind anti-GUCY2C antibody with a linear range of 1-144 ng/mL.
Endotoxin level	<0.1 EU/µg of the protein by the LAL method.
Expression system	Mammalian Cells
Accession	P25092
Protein length	Ser24-Gln430
Nature	Recombinant
Stability and Storage	Use a manual defrost freezer and avoid repeated freeze thaw cycles. Store at 2 to 8°C for one week. Store at -20 to -80°C for twelve months from the date of receipt.
Reconstitution	Reconstitute in sterile water for a stock solution. A copy of datasheet will be provided with the products, please refer to it for details.

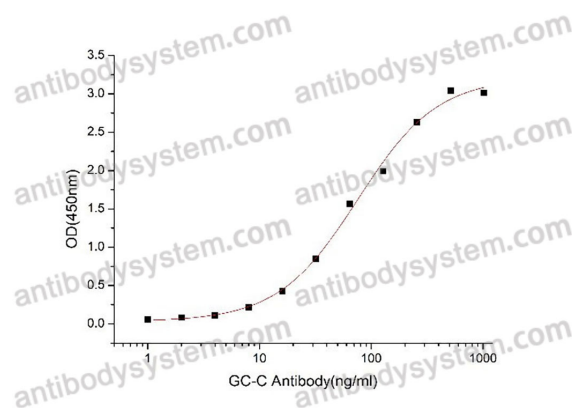
Recombinant Proteins & Antibodies

Species Homo sapiens (Human)

Shipping In general, proteins are provided as lyophilized powder/frozen liquid. They are shipped out with dry ice/blue ice unless customers require otherwise.

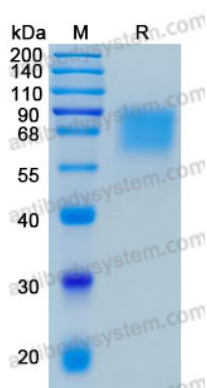
Note For research use only.

Data Image



Immobilized human GUCY2C/GCC (Cat #: AHD65601) at 1 µg/mL (100 µL/well) can bind anti-GUCY2C antibody with a linear range of 1-144 ng/mL.

Bioactivity



SDS-PAGE

SDS-PAGE for Recombinant Human GC-C protein