

Recombinant Human IGFBP6 Protein, C-His (Active)

Summary

Catalog No.	AHD63501
Alternative Names	Insulin-like growth factor-binding protein 6, IBP-6, IBP6, IGFBP-6, IGF-binding protein 6, IGFBP6
Form	Lyophilized
Storage buffer	Lyophilized from a solution in PBS pH 7.4, 5% Trehalose, 5% Mannitol.
Purity	>90% as determined by SDS-PAGE.
Applications	Bioactivity, ELISA, Immunogen, SDS-PAGE, WB
Biological activity	Measured by its ability to inhibit the biological activity of IGF-I or IGF-II on human breast cancer cells (MCF 7). The ED50 for this effect is 0.025-0.15 µg/mL in the presence of 14 ng/mL recombinant human IGF II.
Endotoxin level	<0.1 EU/µg of the protein by the LAL method.
Expression system	Mammalian Cells
Accession	P24592
Protein length	Ala25-Gly240
Nature	Recombinant
Stability and Storage	Use a manual defrost freezer and avoid repeated freeze thaw cycles. Store at 2 to 8°C for one week. Store at -20 to -80°C for twelve months from the date of receipt.
Reconstitution	Reconstitute in sterile water for a stock solution. A copy of datasheet will be provided with the products, please refer to it for details.
Species	Homo sapiens (Human)

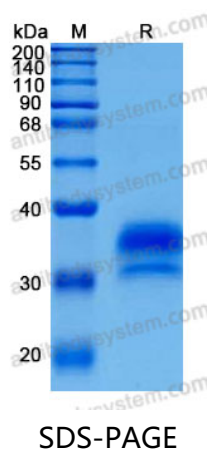
Shipping

In general, proteins are provided as lyophilized powder/frozen liquid. They are shipped out with dry ice/blue ice unless customers require otherwise.

Note

For research use only.

Data Image



SDS-PAGE for Recombinant Human IGFBP6 protein