

Recombinant Human EFNA1 Protein, C-His (Active)

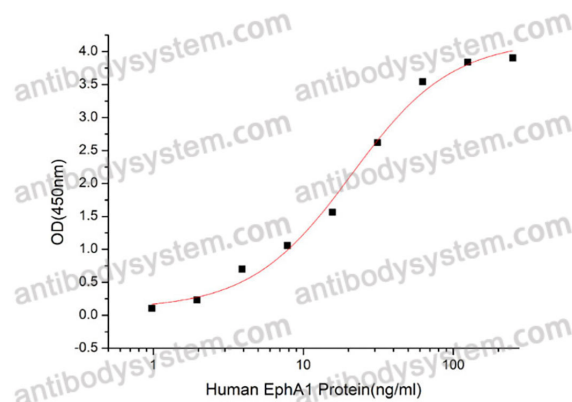
Summary

Catalog No.	AHD42701
Alternative Names	EPLG1, EFNA1, LERK1, Immediate early response protein B61, EPH-related receptor tyrosine kinase ligand 1, TNFAIP4, TNF alpha-induced protein 4, LERK-1, Ephrin-A1, Tumor necrosis factor alpha-induced protein 4
Form	Lyophilized
Storage buffer	Lyophilized from a solution in PBS pH 7.4, 5% Trehalose, 5% Mannitol.
Purity	>90% as determined by SDS-PAGE.
Applications	Bioactivity, ELISA, Immunogen, SDS-PAGE, WB
Biological activity	Measured by its binding ability in a functional ELISA. When recombinant human (rh) EphA2 is coated at 2 µg/mL (100 µL/well), the concentration of rhEFNA1 (Cat #: AHD42701) that produces 50% of the optimal binding response is found to be approximately 0.6-3 ng/mL.
Endotoxin level	<0.1 EU/µg of the protein by the LAL method.
Expression system	Mammalian Cells
Accession	P20827
Protein length	Asp19-Ser182
Nature	Recombinant
Stability and Storage	Use a manual defrost freezer and avoid repeated freeze thaw cycles. Store at 2 to 8°C for one week. Store at -20 to -80°C for twelve months from the date of receipt.
Reconstitution	Reconstitute in sterile water for a stock solution. A copy of datasheet will be provided with the products, please refer to it for details.

Recombinant Proteins & Antibodies

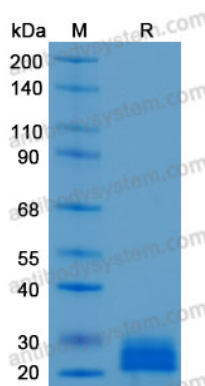
Species	Homo sapiens (Human)
Shipping	In general, proteins are provided as lyophilized powder/frozen liquid. They are shipped out with dry ice/blue ice unless customers require otherwise.
Note	For research use only.

Data Image



Measured by its binding ability in a functional ELISA. When recombinant human (rh) EphA2 is coated at 2 µg/mL (100 µL/well), the concentration of rhEFNA1 (Cat #: AHD42701) that produces 50% of the optimal binding response is found to be approximately 0.6-3 ng/mL.

Bioactivity



SDS-PAGE

SDS-PAGE for Recombinant Human Ephrin A1 protein