

# Recombinant Human CD22 Protein, C-hFc-His (Active)

## Summary

---

<b>Catalog No.</b>	AHD38501
<b>Alternative Names</b>	Sialic acid-binding Ig-like lectin 2, Siglec-2, CD22, T-cell surface antigen Leu-14, BL-CAM, SIGLEC2, B-lymphocyte cell adhesion molecule, B-cell receptor CD22
<b>Form</b>	Lyophilized
<b>Storage buffer</b>	Lyophilized from a solution in PBS pH 7.4, 5% Trehalose, 5% Mannitol.
<b>Purity</b>	>90% as determined by SDS-PAGE.
<b>Applications</b>	Bioactivity, ELISA, Immunogen, SDS-PAGE, WB
<b>Biological activity</b>	Immobilized human CD22 (Cat #: AHD38501) at 0.5 µg/mL (100 µL/well) can bind anti-CD22 antibody with a linear range of 0.01-1.28 ng/mL.
<b>Endotoxin level</b>	<0.1 EU/µg of the protein by the LAL method.
<b>Expression system</b>	Mammalian Cells
<b>Accession</b>	P20273
<b>Protein length</b>	Asp20-Arg687
<b>Nature</b>	Recombinant
<b>Stability and Storage</b>	Use a manual defrost freezer and avoid repeated freeze thaw cycles. Store at 2 to 8°C for one week. Store at -20 to -80°C for twelve months from the date of receipt.
<b>Reconstitution</b>	Reconstitute in sterile water for a stock solution. A copy of datasheet will be provided with the products, please refer to it for details.

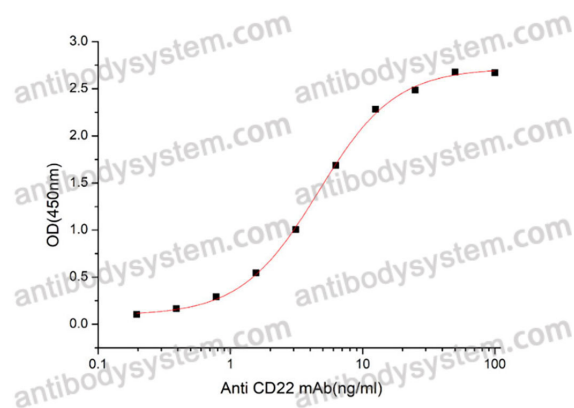
## Recombinant Proteins & Antibodies

**Species** Homo sapiens (Human)

**Shipping** In general, proteins are provided as lyophilized powder/frozen liquid. They are shipped out with dry ice/blue ice unless customers require otherwise.

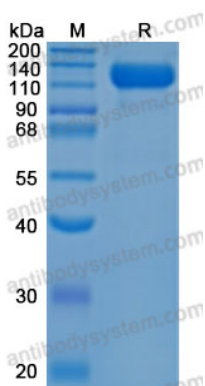
**Note** For research use only.

## Data Image



Immobilized human CD22 (Cat #: AHD38501) at 0.5  $\mu\text{g/mL}$  (100  $\mu\text{L/well}$ ) can bind anti-CD22 antibody with a linear range of 0.01-1.28 ng/mL.

### Bioactivity



### SDS-PAGE

SDS-PAGE for Recombinant Human CD22 protein