

Recombinant Human PI3 Protein, C-10*His (Active)

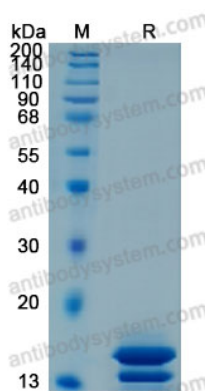
Summary

Catalog No.	AHD36401
Alternative Names	PI3, Elastase-specific inhibitor, WAP3, Elafin, Protease inhibitor WAP3, Peptidase inhibitor 3, PI-3, Skin-derived antileukoproteinase, SKALP, ESI, WFDC14, WAP four-disulfide core domain protein 14
Form	Lyophilized
Storage buffer	Lyophilized from a solution in PBS pH 7.4, 5% Trehalose, 5% Mannitol.
Purity	>90% as determined by SDS-PAGE.
Applications	Bioactivity, ELISA, Immunogen, SDS-PAGE, WB
Biological activity	Measured by its ability to inhibit neutrophil elastase cleavage of the fluorogenic peptide substrate, MeOSuc-Ala-Ala-Pro-Val-7-amido-4-methylcoumarin (MeOSuc-AAPV-AMC). The IC50 value is <50 nM, as measured under the described conditions.
Endotoxin level	<0.1 EU/μg of the protein by the LAL method.
Expression system	Mammalian Cells
Accession	P19957
Protein length	Ala23-Gln117
Nature	Recombinant
Stability and Storage	Use a manual defrost freezer and avoid repeated freeze thaw cycles. Store at 2 to 8°C for one week. Store at -20 to -80°C for twelve months from the date of receipt.
Reconstitution	Reconstitute in sterile water for a stock solution. A copy of datasheet will be provided with the products, please refer to it for details.

Recombinant Proteins & Antibodies

Species	Homo sapiens (Human)
Shipping	In general, proteins are provided as lyophilized powder/frozen liquid. They are shipped out with dry ice/blue ice unless customers require otherwise.
Note	For research use only.

Data Image



SDS-PAGE

SDS-PAGE for Recombinant Human Elafin/ESI protein