

Recombinant Human CD326/EPCAM Protein, C-His (Active)

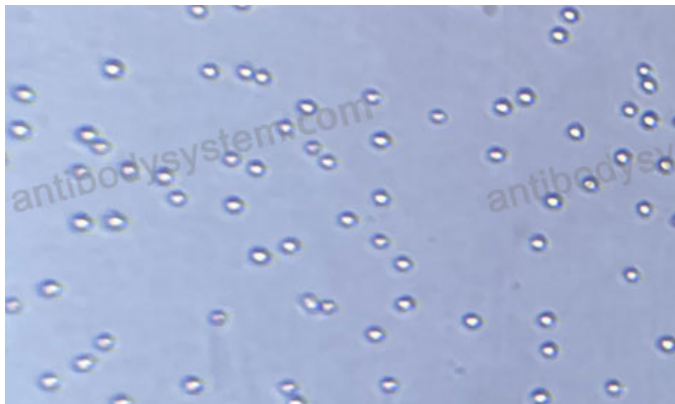
Summary

Catalog No.	AHD17401
Alternative Names	Epithelial glycoprotein 314, hEGP314, Major gastrointestinal tumor-associated protein GA733-2, EGP314, TACSTD1, Adenocarcinoma-associated antigen, TROP1, EPCAM, Epithelial glycoprotein, KS 1/4 antigen, Tumor-associated calcium signal transducer 1, M4S1, CD326, Ep-CAM, EGP, Epithelial cell adhesion molecule, M1S2, KSA, Cell surface glycoprotein Trop-1, GA733-2, Epithelial cell surface antigen, MIC18
Form	Lyophilized
Storage buffer	Lyophilized from a solution in PBS pH 7.4, 5% Trehalose, 5% Mannitol.
Purity	>90% as determined by SDS-PAGE.
Applications	Bioactivity, ELISA, Immunogen, SDS-PAGE, WB
Biological activity	Measured by the ability of the immobilized protein to support the adhesion of mouse embryonic fibroblast cells (NIH-3T3). When cells are added to CD326/EPCAM (Cat #: AHD17401) coated plates (1.25µg/mL, 100µL/well), approximately >30% will adhere specifically after 30 minutes at 37°C
Endotoxin level	<0.1 EU/µg of the protein by the LAL method.
Expression system	Mammalian Cells
Accession	P16422
Protein length	Gln24-Lys265

Recombinant Proteins & Antibodies

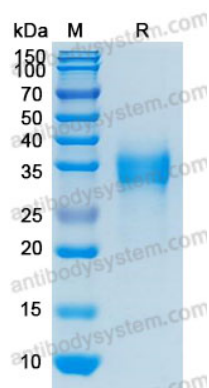
Nature	Recombinant
Stability and Storage	Use a manual defrost freezer and avoid repeated freeze thaw cycles. Store at 2 to 8°C for one week. Store at -20 to -80°C for twelve months from the date of receipt.
Reconstitution	Reconstitute in sterile water for a stock solution. A copy of datasheet will be provided with the products, please refer to it for details.
Species	Homo sapiens (Human)
Shipping	In general, proteins are provided as lyophilized powder/frozen liquid. They are shipped out with dry ice/blue ice unless customers require otherwise.
Note	For research use only.

Data Image



Bioactivity

Measured by the ability of the immobilized protein to support the adhesion of mouse embryonic fibroblast cells (NIH-3T3). When cells are added to CD326/EPCAM (Cat #: AHD17401) coated plates (1.25µg/mL, 100µL/well), approximately >30% will adhere specifically after 30 minutes at 37°C



SDS-PAGE

SDS-PAGE for Recombinant Human EpCAM protein