

Recombinant Human CD31/PECAM1 Protein, C-His (Active)

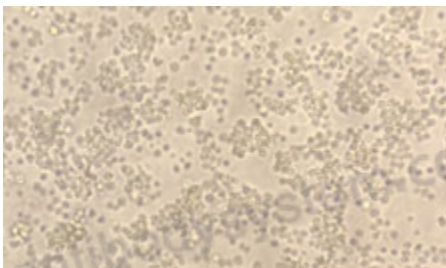
Summary

Catalog No.	AHD16401
Alternative Names	PECAM-1, Platelet endothelial cell adhesion molecule, GPIIA', PECAM1, PECA1, EndoCAM, CD31
Form	Lyophilized
Storage buffer	Lyophilized from a solution in PBS pH 7.4, 5% Trehalose, 5% Mannitol.
Purity	>90% as determined by SDS-PAGE.
Applications	Bioactivity, ELISA, Immunogen, SDS-PAGE, WB
Biological activity	Measured by the ability of the immobilized protein to support the adhesion of human acute T cell leukemia cells (Jurkat). When 8×10^4 cells/well are added to CD31/PECAM1 (Cat #: AHD16401) coated plates (5 µg/mL, 100 µL/well) in the presence of 10 µg/mL PHA, approximately 60-70% will adhere after 30 minutes at 37°C.
Endotoxin level	<0.1 EU/µg of the protein by the LAL method.
Expression system	Mammalian Cells
Accession	P16284
Protein length	Gln28-Lys601
Nature	Recombinant
Stability and Storage	Use a manual defrost freezer and avoid repeated freeze thaw cycles. Store at 2 to 8°C for one week. Store at -20 to -80°C for twelve months from the date of receipt.

Recombinant Proteins & Antibodies

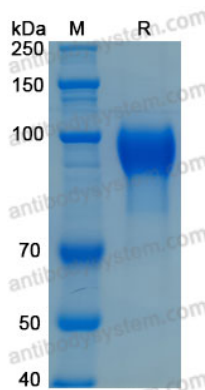
Reconstitution	Reconstitute in sterile water for a stock solution. A copy of datasheet will be provided with the products, please refer to it for details.
Species	Homo sapiens (Human)
Shipping	In general, proteins are provided as lyophilized powder/frozen liquid. They are shipped out with dry ice/blue ice unless customers require otherwise.
Note	For research use only.

Data Image



Bioactivity

Measured by the ability of the immobilized protein to support the adhesion of human acute T cell leukemia cells (Jurkat). When 8×10^4 cells/well are added to CD31/PECAM1 (Cat #: AHD16401) coated plates (5 μ g/mL, 100 μ L/well) in the presence of 10 μ g/mL PHA, approximately 60-70% will adhere after 30 minutes at 37°C.



SDS-PAGE

SDS-PAGE for Recombinant Human CD31/PECAM-1 protein