

Recombinant Human CD116/CSF2RA Protein, C-10*His (Active)

Summary

Catalog No.	AHD11501
Alternative Names	CD116, CSF2R, GMR-alpha, CSF2RA, Granulocyte-macrophage colony-stimulating factor receptor subunit alpha, CSF2RY, GMCSFR-alpha, GM-CSF-R-alpha, CDw116
Form	Lyophilized
Storage buffer	Lyophilized from a solution in PBS pH 7.4, 5% Trehalose, 5% Mannitol.
Purity	>90% as determined by SDS-PAGE.
Applications	Bioactivity, ELISA, Immunogen, SDS-PAGE, WB
Biological activity	Measured by its ability to inhibit GM-CSF dependent proliferation of human erythroleukemic cells (TF 1). The ED50 for this effect is 1.25-5 µg/mL in the presence of 40 pg/mL of rhGM-CSF.
Endotoxin level	<0.1 EU/µg of the protein by the LAL method.
Expression system	Mammalian Cells
Accession	P15509
Protein length	Leu20-Gly320
Nature	Recombinant
Stability and Storage	Use a manual defrost freezer and avoid repeated freeze thaw cycles. Store at 2 to 8°C for one week. Store at -20 to -80°C for twelve months from the date of receipt.

Recombinant Proteins & Antibodies

Reconstitution

Reconstitute in sterile water for a stock solution. A copy of datasheet will be provided with the products, please refer to it for details.

Species

Homo sapiens (Human)

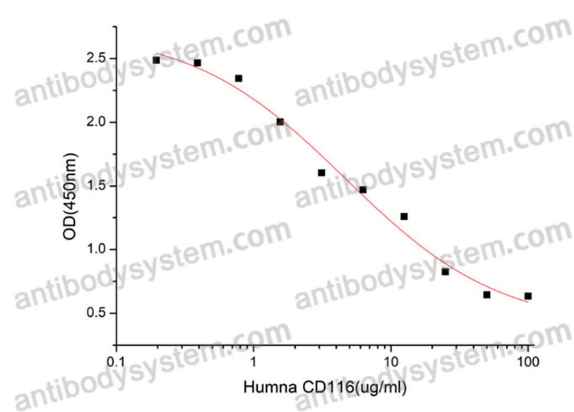
Shipping

In general, proteins are provided as lyophilized powder/frozen liquid. They are shipped out with dry ice/blue ice unless customers require otherwise.

Note

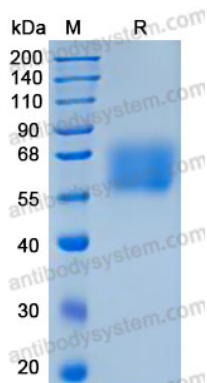
For research use only.

Data Image



Measured by its ability to inhibit GM-CSF dependent proliferation of human erythroleukemic cells (TF 1). The ED50 for this effect is 1.25-5 µg/mL in the presence of 40 pg/mL of rhGM-CSF.

Bioactivity



SDS-PAGE

SDS-PAGE for Recombinant human CD116 protein