

# Recombinant Rat CCL2/MCP-1 Protein, C-His (Active)

## Summary

---

<b>Catalog No.</b>	ARC97801
<b>Alternative Names</b>	C-C motif chemokine 2, Monocyte chemoattractant protein 1, Monocyte chemotactic protein 1, MCP-1, Platelet-derived growth factor-inducible protein JE, Small-inducible cytokine A2, Ccl2, Je, Mcp1, Scya2
<b>Form</b>	Lyophilized
<b>Storage buffer</b>	Lyophilized from a solution in PBS pH 7.4, 5% Trehalose, 5% Mannitol.
<b>Purity</b>	>90% as determined by SDS-PAGE.
<b>Applications</b>	Bioactivity, ELISA, Immunogen, SDS-PAGE, WB
<b>Biological activity</b>	Measured by its ability to chemoattract mouse pro B cells (BaF3) transfected with human CCR2A. The ED50 for this effect is 30-150 ng/mL.
<b>Endotoxin level</b>	<0.1 EU/μg of the protein by the LAL method.
<b>Expression system</b>	Mammalian Cells
<b>Accession</b>	P14844
<b>Protein length</b>	Gln24-Asn148
<b>Nature</b>	Recombinant
<b>Stability and Storage</b>	Use a manual defrost freezer and avoid repeated freeze thaw cycles. Store at 2 to 8°C for one week. Store at -20 to -80°C for twelve months from the date of receipt.
<b>Reconstitution</b>	Reconstitute in sterile water for a stock solution. A copy of datasheet will be provided with the products, please refer to it for details.

## Recombinant Proteins &amp; Antibodies

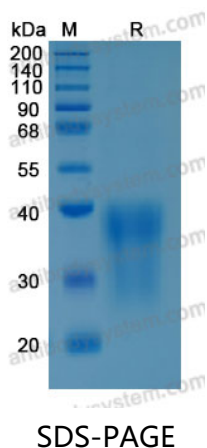
**Species** Rattus norvegicus (Rat)

**Shipping** In general, proteins are provided as lyophilized powder/frozen liquid. They are shipped out with dry ice/blue ice unless customers require otherwise.

**Note** For research use only.

## Data Image

---



SDS-PAGE for Recombinant Rat CCL2/JE/MCP-1 protein