

# Recombinant Human GHR Protein, C-hFc-His (Active)

## Summary

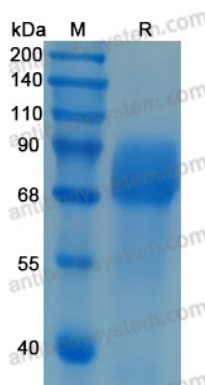
---

<b>Catalog No.</b>	AHC84301
<b>Alternative Names</b>	GHR, GH-binding protein, Growth hormone receptor, GHBP, Somatotropin receptor, GH receptor, Serum-binding protein
<b>Form</b>	Lyophilized
<b>Storage buffer</b>	Lyophilized from a solution in PBS pH 7.4, 5% Trehalose, 5% Mannitol.
<b>Purity</b>	>90% as determined by SDS-PAGE.
<b>Applications</b>	Bioactivity, ELISA, Immunogen, SDS-PAGE, WB
<b>Biological activity</b>	Immobilized human GH at 2 µg/mL (100 µL/well) can bind human GHR (CAT #: AHC84301) with a linear range of 0.1-8.58 ng/mL.
<b>Endotoxin level</b>	<0.1 EU/µg of the protein by the LAL method.
<b>Expression system</b>	Mammalian Cells
<b>Accession</b>	P10912
<b>Protein length</b>	Ala27-Tyr264
<b>Nature</b>	Recombinant
<b>Stability and Storage</b>	Use a manual defrost freezer and avoid repeated freeze thaw cycles. Store at 2 to 8°C for one week. Store at -20 to -80°C for twelve months from the date of receipt.
<b>Reconstitution</b>	Reconstitute in sterile water for a stock solution. A copy of datasheet will be provided with the products, please refer to it for details.

## Recombinant Proteins & Antibodies

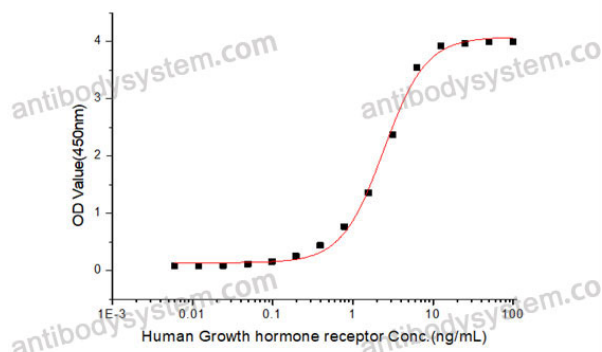
<b>Species</b>	Homo sapiens (Human)
<b>Shipping</b>	In general, proteins are provided as lyophilized powder/frozen liquid. They are shipped out with dry ice/blue ice unless customers require otherwise.
<b>Note</b>	For research use only.

## Data Image



SDS-PAGE

SDS-PAGE for Recombinant Human Growth hormone receptor protein



Bioactivity

Immobilized human GH at 2  $\mu\text{g/mL}$  (100  $\mu\text{L/well}$ ) can bind human GHR (CAT #: AHC84301) with a linear range of 0.1-8.58 ng/mL.