

Recombinant Human CLU/Clusterin Protein, C-His (Active)

Summary

Catalog No.	AHC84101
Alternative Names	APOJ, ApoJalpha, NA1/NA2, Complement cytolysis inhibitor, Complement cytolysis inhibitor a chain, Ku70-binding protein 1, Testosterone-repressed prostate message 2, ApoJbeta, TRPM-2, Complement cytolysis inhibitor b chain, SGP-2, KUB1, Apolipoprotein J, Apo-J, Clusterin, Sulfated glycoprotein 2, Aging-associated gene 4 protein, CLI, CLU, Complement-associated protein SP-40,40
Form	Lyophilized
Storage buffer	Lyophilized from a solution in PBS pH 7.4, 5% Trehalose, 5% Mannitol.
Purity	>90% as determined by SDS-PAGE.
Applications	Bioactivity, ELISA, Immunogen, SDS-PAGE, WB
Biological activity	Measured by its ability to induce clustering of human clear cell carcinoma epithelial cells (Caki 2).
Endotoxin level	<0.1 EU/μg of the protein by the LAL method.
Expression system	Mammalian Cells
Accession	P10909
Protein length	α chain [Ser228-Glu449] & β chain [Asp23-Arg227]
Nature	Recombinant

Recombinant Proteins & Antibodies**Stability and Storage**

Use a manual defrost freezer and avoid repeated freeze thaw cycles. Store at 2 to 8°C for one week. Store at -20 to -80°C for twelve months from the date of receipt.

Reconstitution

Reconstitute in sterile water for a stock solution. A copy of datasheet will be provided with the products, please refer to it for details.

Species

Homo sapiens (Human)

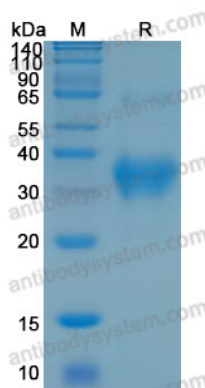
Shipping

In general, proteins are provided as lyophilized powder/frozen liquid. They are shipped out with dry ice/blue ice unless customers require otherwise.

Note

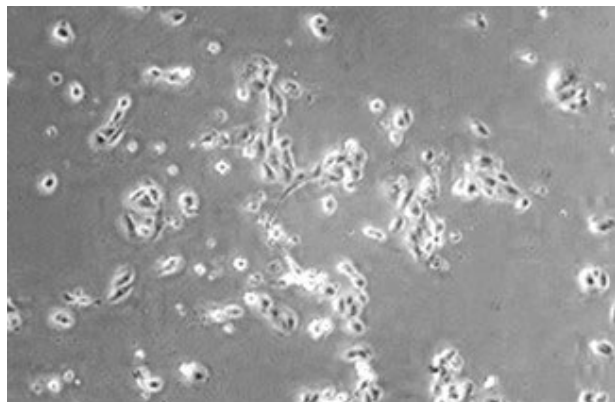
For research use only.

Data Image



SDS-PAGE

SDS-PAGE for Recombinant Human Clusterin alpha chain protein



Bioactivity

Measured by its ability to induce clustering of human clear cell carcinoma epithelial cells (Caki 2).