

Recombinant Human IGFBP1 Protein, C-His (Active)

Summary

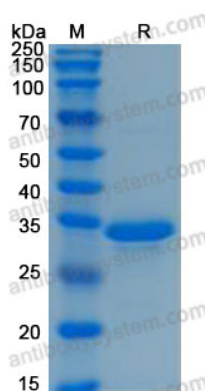
| | |
|------------------------------|---|
| Catalog No. | AHC36501 |
| Alternative Names | IGFBP-1, IGFBP1, Insulin-like growth factor-binding protein 1, Placental protein 12, IBP1, IGF-binding protein 1, IBP-1, PP12 |
| Form | Lyophilized |
| Storage buffer | Lyophilized from a solution in PBS pH 7.4, 5% Trehalose, 5% Mannitol. |
| Purity | >90% as determined by SDS-PAGE. |
| Applications | Bioactivity, ELISA, Immunogen, SDS-PAGE, WB |
| Biological activity | Immobilized recombinant human IGFBP1 (Cat #: AHC36501) at 5 ug/mL (100 uL/well) can bind recombinant human IGF1 with a linear range of 40-160 ng/mL. |
| Endotoxin level | <0.1 EU/μg of the protein by the LAL method. |
| Expression system | Mammalian Cells |
| Accession | P08833 |
| Protein length | Ala26-Asn259 |
| Nature | Recombinant |
| Stability and Storage | Use a manual defrost freezer and avoid repeated freeze thaw cycles. Store at 2 to 8°C for one week. Store at -20 to -80°C for twelve months from the date of receipt. |
| Reconstitution | Reconstitute in sterile water for a stock solution. A copy of datasheet will be provided with the products, please refer to it for details. |
| Species | Homo sapiens (Human) |

Shipping

In general, proteins are provided as lyophilized powder/frozen liquid. They are shipped out with dry ice/blue ice unless customers require otherwise.

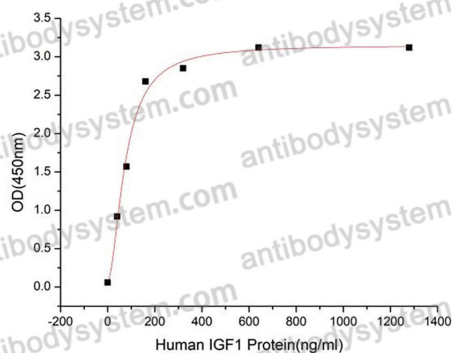
Note

For research use only.

Data Image

SDS-PAGE

SDS-PAGE for Recombinant Human IGFBP1 protein



Bioactivity

Immobilized recombinant human IGFBP1 (Cat #: AHC36501) at 5 ug/mL (100 uL/well) can bind recombinant human IGF1 with a linear range of 40-160 ng/mL.