

Recombinant Human CD14 Protein, C-His (Active)

Summary

| | |
|------------------------------|---|
| Catalog No. | AHC33701 |
| Alternative Names | Myeloid cell-specific leucine-rich glycoprotein, CD14, Monocyte differentiation antigen CD14 |
| Form | Lyophilized |
| Storage buffer | Lyophilized from a solution in PBS pH 7.4, 5% Trehalose, 5% Mannitol. |
| Purity | >90% as determined by SDS-PAGE. |
| Applications | Bioactivity, ELISA, Immunogen, SDS-PAGE, WB |
| Biological activity | Measured by its ability to enhance LPS-stimulated IL-8 secretion by human acute monocytic leukemia cells (THP 1). The ED50 for this effect is 5.7 – 23 ng/mL. |
| Endotoxin level | <0.1 EU/μg of the protein by the LAL method. |
| Expression system | Mammalian Cells |
| Accession | P08571 |
| Protein length | Thr20-Cys352 |
| Nature | Recombinant |
| Stability and Storage | Use a manual defrost freezer and avoid repeated freeze thaw cycles. Store at 2 to 8°C for one week. Store at -20 to -80°C for twelve months from the date of receipt. |
| Reconstitution | Reconstitute in sterile water for a stock solution. A copy of datasheet will be provided with the products, please refer to it for details. |
| Species | Homo sapiens (Human) |

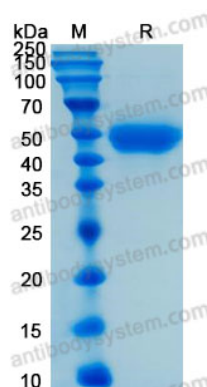
Shipping

In general, proteins are provided as lyophilized powder/frozen liquid. They are shipped out with dry ice/blue ice unless customers require otherwise.

Note

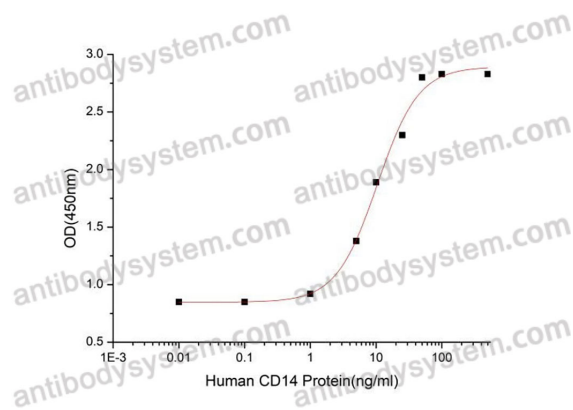
For research use only.

Data Image



SDS-PAGE

SDS-PAGE for Recombinant Human CD14 protein



Bioactivity

Measured by its ability to enhance LPS-stimulated IL-8 secretion by human acute monocytic leukemia cells (THP 1). The ED50 for this effect is 5.7 ± 2.3 ng/mL.