

# Recombinant Human SERPING1 Protein, C-His (Active)

## Summary

---

<b>Catalog No.</b>	AHC14301
<b>Alternative Names</b>	Serpin G1, SERPING1, C1Inh, C1 esterase inhibitor, Plasma protease C1 inhibitor, C1IN, C1 Inh, C1NH, C1-inhibiting factor
<b>Form</b>	Lyophilized
<b>Storage buffer</b>	Lyophilized from a solution in PBS pH 7.4, 5% Trehalose, 5% Mannitol.
<b>Purity</b>	>90% as determined by SDS-PAGE.
<b>Applications</b>	Bioactivity, ELISA, Immunogen, SDS-PAGE, WB
<b>Biological activity</b>	Measured by its ability to inhibit recombinant human Complement Component C1s cleavage of a colorimetric peptide substrate, Ncarbobenzyloxy-Lys-ThioBenzyl ester(Z-K-SBzl). The IC50 is <5 nM, as measured under the described conditions.
<b>Endotoxin level</b>	<0.1 EU/μg of the protein by the LAL method.
<b>Expression system</b>	Mammalian Cells
<b>Accession</b>	P05155
<b>Protein length</b>	Asn23-Ala500
<b>Nature</b>	Recombinant
<b>Stability and Storage</b>	Use a manual defrost freezer and avoid repeated freeze thaw cycles. Store at 2 to 8°C for one week. Store at -20 to -80°C for twelve months from the date of receipt.

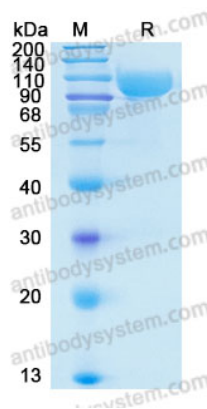
---

**Recombinant Proteins & Antibodies**

<b>Reconstitution</b>	Reconstitute in sterile water for a stock solution. A copy of datasheet will be provided with the products, please refer to it for details.
<b>Species</b>	Homo sapiens (Human)
<b>Shipping</b>	In general, proteins are provided as lyophilized powder/frozen liquid. They are shipped out with dry ice/blue ice unless customers require otherwise.
<b>Note</b>	For research use only.

## Data Image

---



SDS-PAGE

SDS-PAGE for Recombinant Human Serpin G1 protein