

# Recombinant Human IL1B/IL1F2 Protein, C-His (Active)

## Summary

---

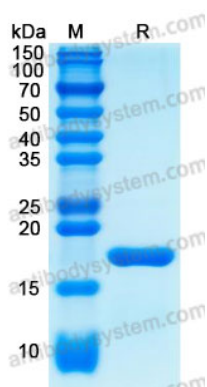
<b>Catalog No.</b>	AHB95601
<b>Alternative Names</b>	Interleukin-1 beta, IL1B, Catabolin, IL1F2, IL-1 beta
<b>Form</b>	Lyophilized
<b>Storage buffer</b>	Lyophilized from a solution in PBS pH 7.4, 5% Trehalose, 5% Mannitol.
<b>Purity</b>	>90% as determined by SDS-PAGE.
<b>Applications</b>	Bioactivity, ELISA, Immunogen, SDS-PAGE, WB
<b>Biological activity</b>	Measured in a cell proliferation assay using mouse helper T cells (D10.G4.1). The ED50 for this effect is 0.217-0.870 ng/mL.
<b>Endotoxin level</b>	<1 EU/μg of the protein by the LAL method.
<b>Expression system</b>	E. coli
<b>Accession</b>	P01584
<b>Protein length</b>	Ala117-Ser269
<b>Nature</b>	Recombinant
<b>Stability and Storage</b>	Use a manual defrost freezer and avoid repeated freeze thaw cycles. Store at 2 to 8°C for one week. Store at -20 to -80°C for twelve months from the date of receipt.
<b>Reconstitution</b>	Reconstitute in sterile water for a stock solution. A copy of datasheet will be provided with the products, please refer to it for details.
<b>Species</b>	Homo sapiens (Human)

**Shipping**

In general, proteins are provided as lyophilized powder/frozen liquid. They are shipped out with dry ice/blue ice unless customers require otherwise.

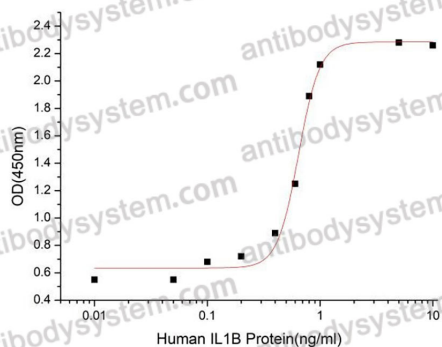
**Note**

For research use only.

**Data Image**

SDS-PAGE

SDS-PAGE for Recombinant Human IL-1 beta protein



Bioactivity

Measured in a cell proliferation assay using mouse helper T cells (D10.G4.1). The ED50 for this effect is 0.217-0.870 ng/mL.